



# LFB

Edition 3

# Hunting and Shooting

Accurate • Reliable • Convincing



Made in Germany

[www.lfb-munition.com](http://www.lfb-munition.com)

Made in Germany

Philosophy – accurate, reliable, convincing ...	4
Quality and calibre	5
<b>Hunting worldwide</b>	
LFB Compact – Hunting cartridges with lead-free bullets	6 – 13
LFB 3 Band Classic – Hunting cartridges with lead-free bullets	14 – 33
Bonded bullets – Hunting cartridges with high-quality, strong-walled, lead-core bullets	34 – 71
Drive hunt cartridges – Hunting cartridges with bonded lead-core bullets	72 – 77
Special bullets for dog handlers – Hunting cartridges with bonded lead-core bullets	78 – 83
Soft point bullets – Hunting cartridges with traditional lead-core bullets	84 – 89
<b>Sport shooting</b>	
Long-Range cartridges – Sport shooting cartridges with lead-free bullets	90 – 97

# Accurate, reliable, convincing ...

... are the cartridges manufactured by LFB – Labor für Ballistik and therefore most suitable for the demanding hunter, the police and special task forces as well as for sport shooters.

Hunting means responsibility for nature and environment. The selection of first-class equipment represents an important contribution. LFB develops the ammunition for a responsible pleasure of hunting.

The manufacturing of ammunition – from traditional bullets to purpose-built special bullets – requires expert skills.

Since 1998 the name LFB – Labor für Ballistik has been a synonym for highest quality demands. Apart from the production of standard ammunition, the company manufactures cartridges for rarely used calibres, purpose-built items for special shooting ranges and shooting cinemas, particularly high-quality ammunition for big game hunting, and test series for newly developed guns. Due to the close collaboration of the development and production departments, it is possible to find the perfect solution for the most different and demanding customers' requirements.

This specialisation is important to Klaus Herrlinger, founder and owner of LFB, and himself a passionate hunter, feeling a close relation with the African continent. Due to his profound knowledge, he is a sought-after expert for weapons and ammunition. The development and production of high-quality ammunition based on own experiences and ideas is carried out entirely in Germany. A continuous documentation ensures the high quality of the products, estimated not only by private customers but also by well-known companies of the arms and ammunition industry in Germany and abroad.





Practical test: shot into a gelatin block

## Quality and calibre

Very high quality standards are taken for granted by LFB. All components needed for the production of the cartridges are checked by the in-house quality assurance. During the manufacturing process the cartridges are permanently monitored by measuring the gas pressure and velocity. This additionally guarantees the customer a high degree of safety.

All types of bullets are tested for their suitability and target effectiveness. The continuous documentation permits the delivery of the ammunition with the same loading data, even after years.

For big game ammunition only strong-walled bonded bullets are used. Bonded bullet means that the bullet core is tightly bonded to the bullet jacket.

Whether for hunting in Germany, in Europe or big game hunting – LFB offers products appropriate to the corresponding calibre so that the game shot is killed reliably and quickly.



# Hunting worldwide





# LFB COMPACT

Hunting cartridges with lead-free bullets



# Non-fragmenting deformation bullets

For those who prefer non-fragmenting deformation bullets the lead-free LFB COMPACT bullet has been developed. The use of a special material as well as the bullet design provide a good deformation of the bullet and prevent fragmentation. This is ensured for small and larger game.

When developing the lead-free LFB COMPACT bullet the focus was laid on the reliable deformation at normal shooting distances, thus a higher BC value was renounced. Due to the reliable deformation of the bullet in the body of the game a good shock effect is achieved. The bullet has been designed with a sharp edge to provide a circular bullet entry and cut hair.

The required and constant energy transfer is ensured by the high bullet mass. A 2-fold to 3-fold calibre sized exit hole provide the required stalking signs and reliable bleeding even with a thicker fat cover. Designed according to the LFB 3 band technology the bullet safely passes through the barrel by means of the 3 driving bands.

## Safe hunting

The LFB COMPACT cartridges have the following properties:

- Reliable deformation – no fragmentation
- Sharp edge to provide cut hair and a circular entry hole
- Good shock effect
- Ensured stalking signs





## Technology

The lead-free LFB COMPACT bullet has been designed according to the LFB 3 BAND technology. This considerably minimises the strain when the bullet passes through the barrel. The homogenous, lead-free copper alloy ensures the very good deformation of the bullet. The higher bullet weight normally produces an exit hole. Due to the hollow point with deformation starter a good killing effect is achieved even with smaller game. The cannellure provides firm hold of bullet in the cartridge, even when fired from automatic guns.

## Information packaging units

The standard packaging unit is 10 cartridges per cartridge box.

For reloaders our bullets are also available in packaging units of 50 pieces each.



Bullet LFB COMPACT deformed



**ATTENTION!** Fire or projection hazard.  
Keep away from heat, hot surfaces, sparks, open flames  
or other ignition sources. No smoking.



## Calibre 7 x 64

### LFB COMPACT

Bullet weight 9.0 g / 139 grs.



Distance	m	0	50	100	150	200	250	300
Velocity	m/s	909	876	844	812	782	752	722
Energy	J	3,719	3,452	3,202	2,969	2,749	2,543	2,348
GEE* + 190 m	cm	-5.0	+1.0	+3.9	+3.2	-1.2	-9.4	-22.0

Lead-free

Item no.: 115 008

## Calibre 7 x 65 R

### LFB COMPACT

Bullet weight 9.0 g / 139 grs.



Distance	m	0	50	100	150	200	250	300
Velocity	m/s	871	839	808	777	747	718	690
Energy	J	3,414	3,167	2,936	2,718	2,513	2,321	2,140
GEE* + 184 m	cm	-5.0	+1.2	+4.0	+2.9	-2.0	-11.4	-25.7

Lead-free

Item no.: 115 009

## Calibre .308 Winchester

### LFB COMPACT

Bullet weight 10.7 g / 165 grs.



Distance	m	0	50	100	150	200	250	300
Velocity	m/s	814	776	740	704	670	636	604
Energy	J	3,542	3,223	2,927	2,652	2,399	2,164	1,948
GEE* + 169 m	cm	-5.0	+1.5	+4.0	+2.1	-5.0	-17.4	-35.6

Lead-free

Item no.: 115,010

## Calibre .30 - 06

### LFB COMPACT

Bullet weight 10.7 g / 165 grs.



Distance	m	0	50	100	150	200	250	300
Velocity	m/s	845	807	769	733	698	663	630
Energy	J	3,817	3,478	3,164	2,872	2,601	2,352	2,120
GEE* + 176 m	cm	-5.0	+1.4	+4.0	+2.6	-3.5	-14.8	-31.5

Lead-free

Item no.: 115 011



# Calibre .300 Winchester Magnum



## LFB COMPACT

Bullet weight 10.7 g / 165 grs.



Distance	m	0	50	100	150	200	250	300
Velocity	m/s	905	865	826	788	751	715	680
Energy	J	4,379	3,999	3,647	3,320	3,017	2,736	2,476
GEE* + 187 m	cm	-5.0	+1.1	+3.9	+3.1	-1.6	-10.6	-24.6
Lead-free						Item no.: 115 012		

# Calibre .300 H + H Magnum

## LFB COMPACT

Bullet weight 10.7 g / 165 grs.



Distance	m	0	50	100	150	200	250	300
Velocity	m/s	906	871	836	802	769	735	706
Energy	J	4,388	4,052	3,736	3,441	3,165	2,907	2,665
GEE* + 188 m	cm	-5.0	+1.1	+3.8	+3.1	-1.4	-9.9	-23.1
Lead-free						Item no.: 115 013		

# Calibre 8 x 57 IS

## LFB COMPACT

Bullet weight 12.0 g / 185 grs.



Distance	m	0	50	100	150	200	250	300
Velocity	m/s	801	763	727	691	656	623	590
Energy	J	3,846	3,493	3,165	2,863	2,583	2,325	2,087
GEE* + 166 m	cm	-5.0	+1.6	+4.1	+1.8	-5.7	-18.7	-37.6
Lead-free						Item no.: 115 021		

# Calibre 8 x 57 IRS

## LFB COMPACT

Bullet weight 12.0 g / 185 grs.



Distance	m	0	50	100	150	200	250	300
Velocity	m/s	779	742	706	671	637	604	571
Energy	J	3,638	3,299	2,987	2,698	2,431	2,185	1,958
GEE* + 161 m	cm	-5.0	+1.7	+4.0	+1.3	-6.8	-20.7	-41.3
Lead-free						Item no.: 115 022		

\* Recommended zero distance

## Calibre 8 x 68 S

### LFB COMPACT

Bullet weight 12.0 g / 185 grs.



Distance	m	0	50	100	150	200	250	300
Velocity	m/s	891	851	812	774	737	701	666
Energy	J	4,759	4,339	3,950	3,589	3,255	2,945	2,659
GEE* + 185 m	cm	-5.0	+1.2	+3.9	+3.0	-1.9	-11.5	-26.1

Lead-free

Item no.: 115 023

## Calibre 8.5 x 55 Blaser

### LFB COMPACT

Bullet weight 13.0 g / 200 grs.



Distance	m	0	50	100	150	200	250	300
Velocity	m/s	895	876	857	839	820	802	784
Energy	J	5,191	4,973	4,761	4,562	4,358	4,168	3,983
GEE* + 194 m	cm	-5.0	+1.0	+3.8	+3.2	-0.7	-8.4	-19.9

Lead-free

Item no.: 115 029

## Calibre 9.3 x 62

### LFB COMPACT

Bullet weight 15.0 g / 232 grs.



Distance	m	0	50	100	150	200	250	300
Velocity	m/s	787	749	712	677	642	608	575
Energy	J	4,656	4,219	3,814	3,441	3,097	2,781	2,487
GEE* + 163 m	cm	-5.0	+1.7	+4.1	+1.5	-6.4	-20.0	-40.1

Lead-free

Item no.: 115 031

## Calibre 9.3 x 64

### LFB COMPACT

Bullet weight 16.0 g / 247 grs.



Distance	m	0	50	100	150	200	250	300
Velocity	m/s	845	806	767	730	694	658	624
Energy	J	5,713	5,191	4,709	4,261	3,849	3,468	3,116
GEE* + 175 m	cm	-5.0	+1.4	+4.0	+2.5	-3.7	-15.1	-32.0

Lead-free

Item no.: 115 033





# Calibre 9.3 x 74 R



## LFB COMPACT

Bullet weight 15.0 g / 232 grs.



Distance	m	0	50	100	150	200	250	300
Velocity	m/s	778	740	704	668	634	600	568
Energy	J	4,550	4,121	3,724	3,357	3,020	2,709	2,423
GEE* + 161 m	cm	-5.0	+1.8	+4.1	+1.3	-6.9	-20.9	-41.7
Lead-free						Item no.: 115 032		

# Calibre .375 H + H Magnum

## LFB COMPACT

Bullet weight 17.0 g / 262 grs.



Distance	m	0	50	100	150	200	250	300
Velocity	m/s	827	790	755	720	686	653	621
Energy	J	5,806	5,302	4,834	4,398	3,994	3,619	3,272
GEE* + 172 m	cm	-5.0	+1.4	+4.0	+2.3	-4.3	-16.1	-33.5
Lead-free						Item no.: 115 034		

# Calibre 10.3 CAPRA

## LFB COMPACT

Bullet weight 13.8 g / 213 grs.



Distance	m	0	50	100	150	200	250	300
Velocity	m/s	965	921	879	838	799	760	723
Energy	J	6,427	5,859	5,335	4,851	4,403	3,988	3,604
GEE* + 197 m	cm	-5.0	+0.8	+3.7	+3.5	-0.3	-7.9	-19.6
Lead-free						Item no.: 115 036		

# Calibre .408 Chey Tac

## LFB COMPACT

Bullet weight 27.2 g / 420 grs.



Distance	m	0	50	100	150	200	250	300
Velocity	m/s	890	870	851	832	813	794	776
Energy	J	10,780	10,308	9,853	9,415	8,993	8,586	8,194
GEE* + 191 m	cm	-5.0	+1.1	+3.9	+3.2	-1.0	-9.1	-21.0
Lead-free						Item no.: 115 038		

\* Recommended zero distance

# Hunting worldwide





# LFB 3 BAND CLASSIC

Hunting cartridges with lead-free bullets



Philosophy

Lead-free bullets

Bonded bullets

Drive hunt cartridges

Special bullets for  
dog handlers

Soft point bullets

Long-Range cartridges

# Centuries-old technology leads to success

The cartridges with the lead-free LFB 3 BAND CLASSIC bullet (former: Jaguar Classic) have been developed on the basis of a centuries-old technology used for artillery bullets.

As, due to the copper alloy used, the weight of the lead-free bullets is about 20 % less than the weight of the lead ones, the bullet speed was increased to get the same energy values.

The aerodynamic bullet shape (high ballistic coefficient) effects that a considerably flatter trajectory is achieved even with slower calibres.

The LFB 3 BAND CLASSIC bullet is a partial fragmentation bullet. Within the body of the game about 20 % to 30 % of the bullet mass in the front section of the bullet fragments into big pieces. The rear section of the bullet is deformed and produces the desired exit hole. By this a high killing effect is achieved.

The combination of the aerodynamic bullet shape with the open hollow point and the special copper alloy provides a very good venison preservation and reduces the risk of haematoma formation.

## Safe hunting

The LFB 3 BAND CLASSIC cartridges have the following properties:

- Aerodynamic bullet shape
- High killing effect
- Very good venison preservation





## Technology

When shot, conventional bullets contact the inner profile of the barrel with their entire length of the cylindrical bearing surface. In order to reduce this strain for the gun and to increase the performance, all lead-free LFB bullets made of a homogeneous copper alloy are produced according to the LFB 3 BAND Technology. The LFB 3 BAND CLASSIC bullets contact the inner profile of the barrel only via the 3 driving bands.

## Recommendation

The LFB 3 BAND bullets should not be fired from polygon barrels.

## Information packaging units

The standard packaging unit is 10 cartridges per cartridge box.

For reloaders our bullets are also available in packaging units of 50 pieces each.



Bullets after shooting into gelatin



**ATTENTION!** Fire or projection hazard.  
Keep away from heat, hot surfaces, sparks, open flames  
or other ignition sources. No smoking.

## Calibre .222 Remington

### LFB 3 BAND CLASSIC

Bullet weight 3.1 g / 48 grs.



Distance	m	0	50	100	150	200	250	300
Velocity	m/s	987	911	838	770	705	643	584
Energy	J	1,515	1,290	1,093	922	773	643	530
GEE* + 189 m	cm	-5.0	+0.9	+3.8	+3.2	-1.4	-11.2	-26.5

Lead-free      Item no.: 110 101

## Calibre .223 Remington

### LFB 3 BAND CLASSIC

Bullet weight 3.1 g / 48 grs.



Distance	m	0	50	100	150	200	250	300
Velocity	m/s	1,029	950	879	806	739	675	615
Energy	J	1,647	1,404	1,193	1,009	849	709	587
GEE* + 196 m	cm	-5.0	+0.7	+3.7	+3.5	-0.5	-9.0	-22.9

Lead-free      Item no.: 110 102

## Calibre 5.6 x 50 R Magnum

### LFB 3 BAND CLASSIC

Bullet weight 3.1 g / 48 grs.



Distance	m	0	50	100	150	200	250	300
Velocity	m/s	1,014	936	863	793	727	664	604
Energy	J	1,599	1,363	1,157	978	821	685	567
GEE* + 194 m	cm	-5.0	+0.8	+3.8	+3.4	-0.7	-9.7	-24.0

Lead-free      Item no.: 110 105

## Calibre .22 - 250 Remington

### LFB 3 BAND CLASSIC

Bullet weight 3.1 g / 48 grs.



Distance	m	0	50	100	150	200	250	300
Velocity	m/s	1,130	1,045	965	890	819	751	687
Energy	J	1,986	1,698	1,448	1,231	1,043	878	734
GEE* + 212 m	cm	-5.0	+0.3	+3.4	+3.9	+1.2	-5.1	-15.8

Lead-free      Item no.: 110 106



# Calibre 5.6 x 52 R



## LFB 3 BAND CLASSIC

Bullet weight 3.1 g / 48 grs.



Distance	m	0	50	100	150	200	250	300
Velocity	m/s	997	920	847	778	713	651	591
Energy	J	1,546	1,317	1,117	943	790	658	544
GEE* + 191 m	cm	-5.0	+0.9	+3.8	+3.3	-1.1	-10.6	-25.5
Lead-free						Item no.: 110 108		

# Calibre .243 Winchester

## LFB 3 BAND CLASSIC

Bullet weight 4.7 g / 72 grs.



Distance	m	0	50	100	150	200	250	300
Velocity	m/s	1,059	1,007	958	910	864	819	776
Energy	J	2,652	2,399	2,168	1,957	1,763	1,586	1,423
GEE* + 213 m	cm	-5.0	+0.4	+3.5	+3.8	+1.2	-4.7	-14.3
Lead-free						Item no.: 111 202		

# Calibre 6 x 62 Freres

## LFB 3 BAND CLASSIC

Bullet weight 4.7 g / 72 grs.



Distance	m	0	50	100	150	200	250	300
Velocity	m/s	1,104	1,059	1,016	975	934	895	857
Energy	J	2,824	2,600	2,393	2,201	2,023	1,857	1,703
GEE* + 213 m	cm	-5.0	+0.2	+3.3	+4.0	+2.1	-2.6	-10.4
Lead-free						Item no.: 111 204		

# Calibre 6 x 62 R Freres

## LFB 3 BAND CLASSIC

Bullet weight 4.7 g / 72 grs.



Distance	m	0	50	100	150	200	250	300
Velocity	m/s	1,104	1,059	1,016	975	934	895	857
Energy	J	2,824	2,600	2,393	2,201	2,023	1,857	1,703
GEE* + 2,3 m	cm	-5.0	+0.2	+3,3	+4.0	+2,1	-2,6	-10.4
Lead-free						Item no.: 300 2,7		

\* Recommended zero distance

## Calibre 6 x 70 R

### LFB 3 BAND CLASSIC

Bullet weight 4.7 g / 72 grs.



Distance	m	0	50	100	150	200	250	300
Velocity	m/s	806	770	736	702	669	637	606
Energy	J	1,505	1,375	1,254	1,142	1,038	941	851
GEE* + 168 m	cm	-5.0	+1.6	+4.1	+2.0	-5.2	-17.8	-36.1

Lead-free

Item no.: 111 203

## Calibre 6.5 Grendel

### LFB 3 BAND CLASSIC

Bullet weight 5.6 g / 87 grs.



Distance	m	0	50	100	150	200	250	300
Velocity	m/s	836	800	765	731	698	666	635
Energy	J	1,971	1,806	1,652	1,508	1,374	1,250	1,135
GEE* + 175 m	cm	-5.0	+1.4	+4.0	+2.5	-3.7	-15.0	-31.8

Lead-free

Item no.: 110 307

## Calibre 6.5 Creedmoor

### LFB 3 BAND CLASSIC

Bullet weight 5.6 g / 87 grs.



Distance	m	0	50	100	150	200	250	300
Velocity	m/s	1,029	988	947	909	871	834	798
Energy	J	2,985	2,750	2,531	2,327	2,138	1,961	1,797
GEE* + 212 m	cm	-5.0	+0.5	+3.5	+3.8	+1.1	-4.9	-14.4

Lead-free

Item no.: 110 306

## Calibre 6.5 - 284 Norma

### LFB 4 BAND CLASSIC

Bullet weight 8.2 g / 127 grs.



Distance	m	0	50	100	150	200	250	300
Velocity	m/s	912	876	839	804	771	738	706
Energy	J	3,411	3,142	2,894	2,663	2,446	2,243	2,054
GEE* + 189 m	cm	-5.0	+1.0	+3.9	+3.1	-1.3	-9.7	-22.8

Lead-free

Item no.: 110 310





# Calibre 6.5 x 55



## LFB 3 BAND CLASSIC

Bullet weight 5.6 g / 86 grs.



Distance	m	0	50	100	150	200	250	300
Velocity	m/s	1,003	969	936	903	872	841	811
Energy	J	2,836	2,647	2,468	2,300	2,142	1,994	1,853
GEE* + 210 m	cm	-5.0	+0.6	+3.6	+3.8	+1.0	-5.2	-14.8
Lead-free						Item no.: 111 308		

# Calibre 6.5 x 57

## LFB 3 BAND CLASSIC

Bullet weight 5.6 g / 86 grs.



Distance	m	0	50	100	150	200	250	300
Velocity	m/s	1,018	984	950	917	885	854	824
Energy	J	2,921	2,727	2,544	2,372	2,209	2,057	1,913
GEE* + 213 m	cm	-5.0	+0.5	+3.5	+3.8	+1.2	-4.6	-13.8
Lead-free						Item no.: 110 301		

# Calibre 6.5 x 57 R

## LFB 3 BAND CLASSIC

Bullet weight 5.6 g / 86 grs.



Distance	m	0	50	100	150	200	250	300
Velocity	m/s	977	944	911	879	848	818	788
Energy	J	2,691	2,510	2,340	2,179	2,028	1,886	1,752
GEE* + 204 m	cm	-5.0	+0.7	+3.7	+3.6	+0.4	-6.3	-16.6
Lead-free						Item no.: 110 3,2		

# Calibre 6.5 x 65 RWS

## LFB 3 BAND CLASSIC

Bullet weight 5.6 g / 86 grs.



Distance	m	0	50	100	150	200	250	300
Velocity	m/s	1,040	1,005	971	938	905	874	843
Energy	J	3,049	2,847	2,657	2,478	2,310	2,151	2,002
GEE* + 218 m	cm	-5.0	+0.5	+3.5	+3.9	+1.6	-3.8	-12.4
Lead-free						Item no.: 110 304		

\* Recommended zero distance

# Calibre 6.5 x 65 R RWS

## LFB 3 BAND CLASSIC

Bullet weight 5.6 g / 86 grs.



Distance	m	0	50	100	150	200	250	300
Velocity	m/s	1,018	984	950	917	885	854	824
Energy	J	2,921	2,727	2,544	2,372	2,209	2,057	1,913
GEE* + 213 m	cm	-5.0	+0.5	+3.5	+3.8	+1.2	-4.6	-13.8

Lead-free

Item no.: 110 305

# Calibre .264 Winchester Magnum

## LFB 3 BAND CLASSIC

Bullet weight 5.6 g / 87 grs.



Distance	m	0	50	100	150	200	250	300
Velocity	m/s	1,071	1,028	987	947	908	870	833
Energy	J	3,235	2,982	2,747	2,528	2,325	2,135	1,959
GEE* + 220 m	cm	-5.0	+0.4	+3.4	+3.9	+1.7	-3.5	-12.0

Lead-free

Item no.: 111 311

# Calibre .270 Winchester

## LFB 3 BAND CLASSIC

Bullet weight 6.9 g / 106 grs.



Distance	m	0	50	100	150	200	250	300
Velocity	m/s	998	959	922	885	850	815	782
Energy	J	3,456	3,194	2,949	2,720	2,507	2,307	2,120
GEE* + 206 m	cm	-5.0	+0.6	+3.6	+3.7	+0.6	-5.9	-16.1

Lead-free

Item no.: 110 351

# Calibre .270 WSM

## LFB 3 BAND CLASSIC

Bullet weight 6.9 g / 106 grs.



Distance	m	0	50	100	150	200	250	300
Velocity	m/s	1,052	1,012	973	935	898	862	828
Energy	J	3,873	3,582	3,311	3,058	2,821	2,601	2,395
GEE* + 218 m	cm	-5.0	+0.4	+3.5	+3.9	+1.6	-3.8	-12.6

Lead-free

Item no.: 110 352



# Calibre .270 Weatherby Magnum



## LFB 3 BAND CLASSIC

Bullet weight 6.9 g / 106 grs.



Distance	m	0	50	100	150	200	250	300
Velocity	m/s	1,061	1,019	979	940	902	865	828
Energy	J	3,903	3,601	3,321	3,061	2,818	2,592	2,375
GEE* + 219 m	cm	-5.0	+0.4	+3.4	+3.9	+1.6	-3.7	-12.3
Lead-free						Item no.: 110 353		

# Calibre 7 x 57

## LFB 3 BAND CLASSIC

Bullet weight 7.6 g / 117 grs.



Distance	m	0	50	100	150	200	250	300
Velocity	m/s	945	903	862	822	784	747	710
Energy	J	3,393	3,097	2,824	2,571	2,336	2,119	1,917
GEE* + 195 m	cm	-5.0	+0.9	+4.0	+3.4	-0.6	-8.6	-21.0
Lead-free						Item no.: 110 401		

# Calibre 7 x 57 R

## LFB 3 BAND CLASSIC

Bullet weight 7.6 g / 117 grs.



Distance	m	0	50	100	150	200	250	300
Velocity	m/s	914	873	833	795	757	720	685
Energy	J	3,178	2,898	2,639	2,400	2,178	1,972	1,781
GEE* + 188 m	cm	-5.0	+1.0	+4.0	+3.1	-1.5	-10.4	-24.0
Lead-free						Item no.: 110 402		

# Calibre 7 x 64

## LFB 3 BAND CLASSIC

Bullet weight 7.6 g / 117 grs.



Distance	m	0	50	100	150	200	250	300
Velocity	m/s	978	935	893	853	813	775	738
Energy	J	3,636	3,322	3,032	2,763	2,514	2,284	2,070
GEE* + 201 m	cm	-5.0	+0.8	+4.0	+3.6	-0.1	-7.1	-18.4
Lead-free						Item no.: 110 403		

\* Recommended zero distance

# Calibre 7 x 65 R

## LFB 3 BAND CLASSIC

Bullet weight 7.6 g / 117 grs.



Distance	m	0	50	100	150	200	250	300
Velocity	m/s	950	908	867	827	789	751	715
Energy	J	3,430	3,132	2,856	2,600	2,363	2,144	1,941
GEE* + 195 m	cm	-5.0	+0.9	+4.0	+3.4	-0.6	-8.5	-20.7

Lead-free

Item no.: 110 404

# Calibre 7 mm Remington Magnum

## LFB 3 BAND CLASSIC

Bullet weight 7.6 g / 117 grs.



Distance	m	0	50	100	150	200	250	300
Velocity	m/s	1,038	994	951	910	870	831	793
Energy	J	4,094	3,753	3,438	3,146	2,876	2,625	2,392
GEE* + 212 m	cm	-5.0	+0.5	+3.5	+3.8	+1.1	-4.8	-14.3

Lead-free

Item no.: 110 405

# Calibre 7 mm STW

## LFB 3 BAND CLASSIC

Bullet weight 7.6 g / 117 grs.



Distance	m	0	50	100	150	200	250	300
Velocity	m/s	1,071	1,023	977	933	890	848	808
Energy	J	4,311	3,935	3,588	3,269	2,974	2,702	2,451
GEE* + 218 m	cm	-5.0	+0.4	+3.4	+3.9	+1.6	-3.9	-12.8

Lead-free

Item no.: 110 406

# Calibre 7 x 66 SE v. Hofe

## LFB 3 BAND CLASSIC

Bullet weight 7.6 g / 117 grs.



Distance	m	0	50	100	150	200	250	300
Velocity	m/s	1,076	1,021	969	918	869	822	777
Energy	J	4,389	3,952	3,556	3,195	2,865	2,564	2,289
GEE* + 215 m	cm	-5.0	+0.4	+3.4	+3.9	+1.4	-4.4	-13.8

Lead-free

Item no.: 110 408



# Calibre 7 x 75 R SE v. Hofe



## LFB 3 BAND CLASSIC

Bullet weight 7.6 g / 117 grs.



Distance	m	0	50	100	150	200	250	300
Velocity	m/s	1,032	986	942	900	858	818	779
Energy	J	4,037	3,688	3,365	3,068	2,792	2,538	2,302
GEE* + 210 m	cm	-5.0	+0.5	+3.5	+3.8	+1.0	-5.2	-15.1
Lead-free						Item no.: 110 407		

# Calibre 7.5 x 55 Swiss

## LFB 3 BAND CLASSIC

Bullet weight 9.2 g / 143 grs.



Distance	m	0	50	100	150	200	250	300
Velocity	m/s	875	834	795	757	720	683	648
Energy	J	3,473	3,159	2,868	2,598	2,349	2,119	1,907
GEE* + 181 m	cm	-5.0	+1.2	+3.9	+2.8	-2.6	-12.8	-28.4
Lead-free						Item no.: 110 500		

# Calibre .308 Winchester

## LFB 3 BAND CLASSIC

Bullet weight 9.2 g / 143 grs.



Distance	m	0	50	100	150	200	250	300
Velocity	m/s	902	862	822	784	747	711	676
Energy	J	3,769	3,439	3,134	2,850	2,588	2,344	2,119
GEE* + 186 m	cm	-5.0	+1.1	+4.0	+3.1	-1.8	-11.0	-25.1
Lead-free						Item no.: 110 501		

# Calibre .30 - 06

## LFB 3 BAND CLASSIC

Bullet weight 9.2 g / 143 grs.



Distance	m	0	50	100	150	200	250	300
Velocity	m/s	934	893	853	814	776	739	703
Energy	J	4,041	3,691	3,367	3,067	2,789	2,530	2,291
GEE* + 192 m	cm	-5.0	+1.0	+4.0	+3,3	-0.9	-9.2	-22.0
Lead-free						Item no.: 110 502		

\* Recommended zero distance



## Calibre .30 R Blaser

### LFB 3 BAND CLASSIC

Bullet weight 9.2 g / 143 grs.



Distance	m	0	50	100	150	200	250	300
Velocity	m/s	946	905	866	828	790	754	719
Energy	J	4,147	3,798	3,474	3,173	2,894	2,635	2,394
GEE* + 195 m	cm	-5.0	+0.9	+3.8	+3.4	-0.6	-8.5	-20.7
Lead-free						Item no.: 110 506		

## Calibre .300 WSM

### LFB 3 BAND CLASSIC

Bullet weight 9.2 g / 143 grs.



Distance	m	0	50	100	150	200	250	300
Velocity	m/s	1,024	981	939	899	859	821	784
Energy	J	4,859	4,458	4,086	3,742	3,422	3,125	2,849
GEE* + 210 m	cm	-5.0	+0,6	+3,6	+3,8	+1.0	-5.2	-15.0
Lead-free						Item no.: 110 503		

## Calibre .300 Winchester Magnum

### LFB 3 BAND CLASSIC

Bullet weight 9.2 g / 143 grs.



Distance	m	0	50	100	150	200	250	300
Velocity	m/s	1,044	1,000	958	917	877	838	801
Energy	J	5,049	4,634	4,249	3,893	3,562	3,255	2,970
GEE* + 214 m	cm	-5.0	+0.5	+3.5	+3.9	+1.3	-4.5	-13.7
Lead-free						Item no.: 110 504		

## Calibre .300 Weatherby Magnum

### LFB 3 BAND CLASSIC

Bullet weight 9.2 g / 143 grs.



Distance	m	0	50	100	150	200	250	300
Velocity	m/s	1,085	1,041	999	958	919	880	843
Energy	J	5,455	5,024	4,625	4,254	3,910	3,590	3,291
GEE* + 222 m	cm	-5.0	+0.3	+3.3	+3.9	+1.8	-3.2	-11.3
Lead-free						Item no.: 110 505		



# Calibre .300 H + H Magnum



## LFB 3 BAND CLASSIC

Bullet weight 9.2 g / 143 grs.



Distance	m	0	50	100	150	200	250	300
Velocity	m/s	943	906	871	836	802	769	736
Energy	J	4,091	3,779	3,487	3,214	2,958	2,719	2,495
GEE* + 195 m	cm	-5.0	+0.9	+3.8	+3.4	-0.6	-8.2	-19.9
Lead-free						Item no.: 110 507		

# Calibre 8 x 57 IS

## LFB 3 BAND CLASSIC

Bullet weight 9.9 g / 154 grs.



Distance	m	0	50	100	150	200	250	300
Velocity	m/s	889	851	814	778	743	708	675
Energy	J	3,944	3,613	3,305	3,019	2,752	2,504	2,273
GEE* + 185 m	cm	-5.0	+1.2	+4.0	+3.0	-1.9	-11.4	-25.7
Lead-free						Item no.: 110 601		

# Calibre 8 x 57 IR

## LFB 3 BAND CLASSIC

Bullet weight 9.9 g / 154 grs.



Distance	m	0	50	100	150	200	250	300
Velocity	m/s	852	815	779	744	709	676	643
Energy	J	3,621	3,313	3,026	2,758	2,510	2,279	2,065
GEE* + 177 m	cm	-5.0	+1.3	+4.0	+2.6	-3.3	-14.0	-30.1
Lead-free						Item no.: 110 607		

# Calibre 8 x 57 IRS

## LFB 3 BAND CLASSIC

Bullet weight 9.9 g / 154 grs.



Distance	m	0	50	100	150	200	250	300
Velocity	m/s	852	815	779	744	709	676	643
Energy	J	3,621	3,313	3,026	2,758	2,510	2,279	2,065
GEE* + 177 m	cm	-5.0	+1.3	+4.0	+2.6	-3.3	-14.0	-30.1
Lead-free						Item no.: 110 602		

\* Recommended zero distance

## Calibre 8 x 64 S

### LFB 3 BAND CLASSIC

Bullet weight 9.9 g / 154 grs.



Distance	m	0	50	100	150	200	250	300
Velocity	m/s	924	886	849	812	777	743	709
Energy	J	4,260	3,915	3,593	3,294	3,014	2,754	2,511
GEE* + 199 m	cm	-5.0	+1.0	+3.8	+3.2	-1.1	-9.2	-22.0

Lead-free

Item no.: 110 605

## Calibre 8 x 65 RS

### LFB 3 BAND CLASSIC

Bullet weight 9.9 g / 154 grs.



Distance	m	0	50	100	150	200	250	300
Velocity	m/s	924	886	849	812	777	743	709
Energy	J	4,260	3,915	3,593	3,294	3,014	2,754	2,511
GEE* + 199 m	cm	-5.0	+1.0	+3.8	+3.2	-1.1	-9.2	-22.0

Lead-free

Item no.: 110 606

## Calibre 8 x 68 S

### LFB 3 BAND CLASSIC

Bullet weight 9.9 g / 154 grs.



Distance	m	0	50	100	150	200	250	300
Velocity	m/s	1,020	979	939	901	863	827	792
Energy	J	5,190	4,781	4,402	4,048	3,719	3,412	3,126
GEE* + 211 m	cm	-5.0	+0.6	+3.6	+3.8	-1.0	-5.0	-14.7

Lead-free

Item no.: 110 603

## Calibre 8 x 75 RS

### LFB 3 BAND CLASSIC

Bullet weight 9.9 g / 154 grs.



Distance	m	0	50	100	150	200	250	300
Velocity	m/s	920	881	843	806	770	735	701
Energy	J	4,222	3,871	3,545	3,242	2,960	2,697	2,453
GEE* + 190 m	cm	-5.0	+1.0	+3.8	+3.2	-1.2	-9.7	-22.8

Lead-free

Item no.: 110 604



# Calibre 8.5 x 55 Blaser



## LFB 3 BAND CLASSIC

Bullet weight 11.8 g / 182 grs.



Distance	m	0	50	100	150	200	250	300
Velocity	m/s	922	903	884	865	846	828	809
Energy	J	5,016	4,809	4,606	4,413	4,228	4,045	3,865
GEE* + 199 m	cm	-5.0	+0.9	+3.8	+3.5	-0.1	-7.1	-17.7
Lead-free						Item no.: 110 658		

# Calibre 8.5 x 63

## LFB 3 BAND CLASSIC

Bullet weight 11.8 g / 182 grs.



Distance	m	0	50	100	150	200	250	300
Velocity	m/s	892	873	854	836	817	799	781
Energy	J	4,695	4,497	4,304	4,124	3,940	3,767	3,600
GEE* + 193 m	cm	-5.0	+1.0	+3.8	+3.2	-0.8	-8.6	-20.2
Lead-free						Item no.: 110 652		

# Calibre 8.5 x 63 R

## LFB 3 BAND CLASSIC

Bullet weight 11.8 g / 182 grs.



Distance	m	0	50	100	150	200	250	300
Velocity	m/s	877	847	818	790	762	735	708
Energy	J	4,553	4,250	3,964	3,693	3,437	3,195	2,967
GEE* + 185 m	cm	-5.0	+1.2	+3.9	+3.0	-1.9	-10.7	-24.3
Lead-free						Item no.: 110 657		

# Calibre .338 Winchester Magnum

## LFB 3 BAND CLASSIC

Bullet weight 11.8 g / 182 grs.



Distance	m	0	50	100	150	200	250	300
Velocity	m/s	912	893	874	855	837	818	800
Energy	J	4,908	4,703	4,505	4,312	4,132	3,948	3,774
GEE* + 197 m	cm	-5.0	+1.0	+3.8	+3.5	-0.3	-7.5	-18.4
Lead-free						Item no.: 110 653		

\* Recommended zero distance



## Calibre .338 Blaser Magnum

### LFB 3 BAND CLASSIC

Bullet weight 11.8 g / 182 grs.



Distance	m	0	50	100	150	200	250	300
Velocity	m/s	957	934	915	896	877	858	840
Energy	J	5,370	5,152	4,936	4,734	4,535	4,341	4,160
GEE* + 205 m	cm	-5.0	+0.7	+3.8	+3.6	+0.5	-5.8	-15.5
Lead-free						Item no.: 110 655		

## Calibre .338 Lapua Magnum

### LFB 3 BAND CLASSIC

Bullet weight 11.8 g / 182 grs.



Distance	m	0	50	100	150	200	250	300
Velocity	m/s	988	968	949	929	910	890	871
Energy	J	5,760	5,529	5,310	5,092	4,881	4,677	4,480
GEE* + 214 m	cm	-5.0	+0.6	+3.5	+3.8	+1.3	-4.3	-13.1
Lead-free						Item no.: 110 654		

## Calibre .340 Weatherby Magnum

### LFB 3 BAND CLASSIC

Bullet weight 11.8 g / 182 grs.



Distance	m	0	50	100	150	200	250	300
Velocity	m/s	978	946	915	884	854	825	797
Energy	J	5,517	5,161	4,825	4,509	4,209	3,927	3,660
GEE* + 205 m	cm	-5.0	+0.7	+3.6	+3.7	+0.5	-6.1	-16.2
Lead-free						Item no.: 110 656		

## Calibre 9.3 x 62

### LFB 3 BAND CLASSIC

Bullet weight 12.2 g / 188 grs.



Distance	m	0	50	100	150	200	250	300
Velocity	m/s	893	845	799	755	711	670	629
Energy	J	4,866	4,359	3,897	3,474	3,088	2,736	2,416
GEE* + 182 m	cm	-5.0	+1.2	+4.0	+2.9	-2.5	-12.7	-28.4
Lead-free						Item no.: 110 701		



# Calibre 9.3 x 64



## LFB 3 BAND CLASSIC

Bullet weight 12.2 g / 188 grs.



Distance	m	0	50	100	150	200	250	300
Velocity	m/s	923	874	827	782	738	695	654
Energy	J	5,197	4,661	4,172	3,726	3,318	2,946	2,606
GEE* + 187 m	cm	-5.0	+1.0	+4.0	+3.1	-1.7	-10.9	-25.3

Lead-free      Item no.: 110 703

# Calibre 9.3 x 74 R

## LFB 3 BAND CLASSIC

Bullet weight 12.2 g / 188 grs.



Distance	m	0	50	100	150	200	250	300
Velocity	m/s	876	829	783	739	697	655	615
Energy	J	4,682	4,191	3,743	3,333	2,960	2,619	2,310
GEE* + 178 m	cm	-5.0	+1.3	+4.0	+2.7	-3.1	-14.0	-30.6

Lead-free      Item no.: 110 702

# Calibre .375 H + H Magnum

## LFB 3 BAND CLASSIC

Bullet weight 14.0 g / 215 grs.



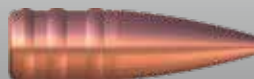
Distance	m	0	50	100	150	200	250	300
Velocity	m/s	906	862	819	778	738	699	661
Energy	J	5,743	5,198	4,697	4,236	3,811	3,419	3,060
GEE* + 185 m	cm	-5.0	+1.1	+3.9	+3.0	-1.9	-11.4	-25.8

Lead-free      Item no.: 110 801

# Calibre .375 Ruger

## LFB 3 BAND CLASSIC

Bullet weight 14.0 g / 215 grs.



Distance	m	0	50	100	150	200	250	300
Velocity	m/s	906	862	819	778	738	699	661
Energy	J	5,743	5,198	4,697	4,236	3,811	3,419	3,060
GEE* + 185 m	cm	-5.0	+1.1	+3.9	+3.0	-1.9	-11.4	-25.8

Lead-free      Item no.: 110 802

\* Recommended zero distance

# Calibre 10.3 x 60 R

## LFB 3 BAND CLASSIC

Bullet weight 13.3 g / 206 grs.



Distance	m	0	50	100	150	200	250	300
Velocity	m/s	834	795	758	721	686	651	617
Energy	J	4,643	4,222	3,833	3,471	3,137	2,829	2,544
GEE* + 173 m	cm	-5.0	+1.4	+4.0	+2.4	-4.1	-15.9	-33.2
Lead-free						Item no.: 110 900		

# Calibre .416 Remington Magnum

## LFB 3 BAND CLASSIC

Bullet weight 17.0 g / 262 grs.



Distance	m	0	50	100	150	200	250	300
Velocity	m/s	883	844	806	769	733	698	664
Energy	J	6,619	6,047	5,517	5,024	4,565	4,141	3,748
GEE* + 184 m	cm	-5.0	+1.2	+4.0	+2.9	-2.1	-11.8	-26.7
Lead-free						Item no.: 111 102		

# Calibre .444 Marlin

## LFB 3 BAND CLASSIC

Bullet weight 13.7 g / 211 grs.



Distance	m	0	50	100	150	200	250	300
Velocity	m/s	789	707	629	557	491	432	3,2
Energy	J	4,264	3,421	2,714	2,126	1,654	1,279	1,002
GEE* + 149 m	cm	-5.0	+2.0	+4.0	-0.2	-12.6	-34.8	-70.8
Lead-free						Item no.: 110 901		

# Calibre .45 / 70 Government

## LFB 3 BAND CLASSIC

Bullet weight 17.4 g / 269 grs.



Distance	m	0	50	100	150	200	250	300
Velocity	m/s	639	601	564	530	496	465	435
Energy	J	3,559	3,149	2,776	2,444	2,148	1,883	1,652
GEE* + 132 m	cm	-5.0	+2.6	+3.5	-3.5	-19.5	-45.1	-81.6
Lead-free						Item no.: 111 301		



# Calibre .45 Blaser



Philosophy

## LFB 3 BAND CLASSIC

Bullet weight 18.8 g / 290 grs.



Distance	m	0	50	100	150	200	250	300
Velocity	m/s	749	707	667	628	591	555	520
Energy	J	5,271	4,703	4,185	3,711	3,280	2,890	2,544
GEE* + 154 m	cm	-5.0	+2.0	+4.0	+0.5	-8.8	-25.5	-50.7

Lead-free

Item no.: 111 303

Lead-free bullets



Bonded bullets

Drive hunt cartridges

Special bullets for dog handlers

Soft point bullets

Long-Range cartridges

\* Recommended zero distance



# Hunting worldwide



# Bonded bullets

Hunting cartridges with high-quality, strong-walled, lead-core bullets



# Always the perfect choice

When using conventional deformation bullets a major part of the bullet weight often gets lost on hitting the target as the lead core separates from the jacket in an uncontrolled manner. As a result the bullet loses its directional stability and the risk arises that the game will not be killed promptly. This usually means tracking of the wounded game as well as unintended suffering to the animal.

The LFB bonded bullets are manufactured using the thermal bonding method, i.e. lead core and jacket are soldered together durably and safely.

## Safe hunting with strong-walled full metal jacket bullets

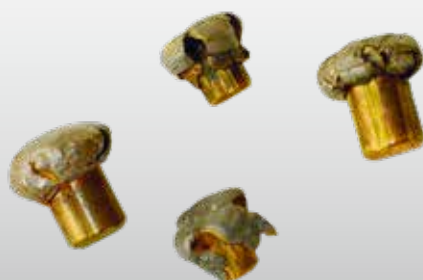
Strong-walled full metal jacket bullets ensure a very good killing effect.



SM VMR =  
full metal jacket round tip

The LFB SOLID cartridges have the following properties:

- Above-average inherent stability –  
no bullet deformation or fragmentation when penetrating strong bones
- Directional stability within the body of the game
- Bullet jacket made of tombac
- Ideal for big game hunting



Bullets LFB SOLID SM TMS HP and SM TMR deformed



Calibre .500 NE LFB SOLID bullet  
SM VMR out of the body of the game



## Safe hunting with strong-walled soft point bullets

Strong-walled soft point bullets (LFB bonded core technology) ensure high penetration with correspondingly high exit probability.

The LFB SOLID cartridges have the following properties:

- Deformation only in the front section of the bullet
- Rear section remains unchanged as calibre-size unit
- Very strong-walled in the driving area and bottom section
- Residual bullet weight between 99 % and 100 %
- No contamination of the venison by lead particles

Depending on calibre and game to be hunted, the following bullet types are available:

- SM TMS = Soft point bullet with pointed tip  
 SM TMS HP = Hollow point  
 SM TMR = Soft point bullet with round tip

For calibres from .375 LFB offers the special bullet “SM TMR Lion Load” which is intended for antelope and cat hunts. It is very soft in the front section and has the same point of impact as the SM TMR. So there is no need to consider adjusting the placement of the shot.

## Technology

The bullets are available in two versions: hollow point (SM TMS HP) and soft point bullet with round tip (SM TMR). Both types are pure deformation bullets. To prevent compression during the shot development the hunting cartridges are equipped with special strong-walled bullets.

## Information packaging units

The standard packaging unit is 10 cartridges per cartridge box.

For reloaders our bullets are also available in packaging units of 50 pieces each.



SM TMS =  
Soft point bullet with pointed tip



SM TMS HP =  
Hollow point



SM TMR =  
Soft point bullet with round tip



**ATTENTION!** Fire or projection hazard.  
 Keep away from heat, hot surfaces, sparks, open flames or other ignition sources. No smoking.



# Calibre 5.6 x 50 R Magnum

## LFB SOLID

SM TMS – Bullet weight 3.24 g / 50 grs.



Distance	m	0	50	100	150	200	250	300
Velocity	m/s	1,050	978	909	844	782	723	666
Energy	J	1,786	1,548	1,339	1,154	991	846	718
GEE* + 202 m	cm	-5.0	+0.6	+3.6	+3.7	+0.2	-7.1	-19.3
Lead-core						Item no.: 300 100		

## LFB SOLID

SM TMS – Bullet weight 3.9 g / 60 grs.



Distance	m	0	50	100	150	200	250	300
Velocity	m/s	934	873	815	759	705	654	605
Energy	J	1,696	1,482	1,291	1,120	967	832	711
GEE* + 185 m	cm	-5.0	+1.1	+3.9	+3.0	-2.0	-12.2	-27.8
Lead-core						Item no.: 300 101		

# Calibre 5.6 x 52 R

## LFB SOLID

SM TMS – Bullet weight 4.6 g / 71 grs.



Distance	m	0	50	100	150	200	250	300
Velocity	m/s	790	739	690	643	598	554	514
Energy	J	1,436	1,257	1,096	951	822	707	607
GEE* + 159 m	cm	-5.0	+1.8	+4.0	+1.1	-7.5	-23.1	-47.3
Lead-core						Item no.: 300 102		

# Calibre 5.6 x 57 R

## LFB SOLID

SM TMS – Bullet weight 4.5 g / 70 grs.



Distance	m	0	50	100	150	200	250	300
Velocity	m/s	968	912	859	807	757	710	663
Energy	J	2,125	1,887	1,672	1,477	1,301	1,142	998
GEE* + 193 m	cm	-5.0	+0.9	+3.8	+3.3	-0.8	-9.2	-22.6
Lead-core						Item no.: 300 104		



# Calibre 5.6 x 61 SE v. Hofe



LFB SOLID

SM TMS HP – Bullet weight 5.0 g / 77 grs.



Distance	m	0	50	100	150	200	250	300
Velocity	m/s	1,054	992	933	877	822	770	720
Energy	J	2,772	2,456	2,172	1,917	1,687	1,480	1,294
GEE* + 207 m	cm	-5.0	+0.5	+3.5	+3.7	+0.7	-5.9	-16.6
Lead-core						Item no.: 300 103		

# Calibre .243 Winchester

LFB SOLID

SM TMS HP – Bullet weight 6.5 g / 100 grs.



Distance	m	0	50	100	150	200	250	300
Velocity	m/s	883	843	804	766	729	694	659
Energy	J	2,526	2,302	2,095	1,902	1,724	1,559	1,406
GEE* + 183 m	cm	-5.0	+1.2	+3.9	+2.9	-2.2	-12.1	-27.2
Lead-core						Item no.: 300 2,7		

# Calibre 6 x 52 R Bretschneider

LFB SOLID

SM TMS HP – Bullet weight 6.5 g / 100 grs.



Distance	m	0	50	100	150	200	250	300
Velocity	m/s	748	708	669	631	594	559	525
Energy	J	1,813	1,623	1,449	1,289	1,144	1,012	894
GEE* + 154 m	cm	-5.0	+2.0	+4.0	+0.5	-8.8	-25.3	-50.1
Lead-core						Item no.: 300 209		

# Calibre 6 x 62 Freres

LFB SOLID

SM TMS HP – Bullet weight 6.5 g / 100 grs.



Distance	m	0	50	100	150	200	250	300
Velocity	m/s	998	954	912	871	831	793	755
Energy	J	3,227	2,951	2,695	2,458	2,239	2,036	1,848
GEE* + 204 m	cm	-5.0	+0.7	+3.6	+3.7	+0.4	-6.4	-17.0
Lead-core						Item no.: 300 204		

\* Recommended zero distance

# Calibre 6 x 62 R Freres

LFB SOLID

SM TMS – Bullet weight 6.5 g / 100 grs.



Distance	m	0	50	100	150	200	250	300
Velocity	m/s	998	954	912	871	831	793	755
Energy	J	3,227	2,951	2,695	2,458	2,239	2,036	1,848
GEE* + 204 m	cm	-5.0	+0.7	+3.6	+3.7	+0.4	-6.4	-17.0
Lead-core						Item no.: 300 207		

# Calibre 6 x 70 R

LFB SOLID

SM TMS – Bullet weight 5.8 g / 90 grs.



Distance	m	0	50	100	150	200	250	300
Velocity	m/s	725	689	655	621	589	557	527
Energy	J	1,533	1,386	1,251	1,125	1,010	905	810
GEE* + 151 m	cm	-5.0	+2.1	+3.9	+0.1	-9.7	-26.9	-52.5
Lead-core						Item no.: 300 206		

LFB SOLID

SM TMS – Bullet weight 6.5 g / 100 grs.



Distance	m	0	50	100	150	200	250	300
Velocity	m/s	649	615	583	551	522	493	465
Energy	J	1,365	1,2,7	1,100	985	881	787	701
GEE* + 136 m	cm	-5.0	+2.5	+3.7	-2.6	-17.1	-40.8	-74.1
Lead-core						Item no.: 300 208		



# Calibre 6.5 Grendel



LFB SOLID

SM TMS – Bullet weight 6.5 g / 100 grs.



Distance	m	0	50	100	150	200	250	300
Velocity	m/s	690	677	664	651	638	626	613
Energy	J	2,160	2,078	1,999	1,922	1,848	1,776	1,706
GEE* + 151 m	cm	-5.0	+2.2	+4.0	+0.1	-9.5	-25.1	-46.8
Lead-free						Item no.: 300 264		

# Calibre 6.5 x 47 Lapua

LFB SOLID

SM TMS – Bullet weight 9.1 g / 140 grs.



Distance	m	0	50	100	150	200	250	300
Velocity	m/s	826	811	796	782	768	754	740
Energy	J	3,095	2,984	2,878	2,776	2,676	2,579	2,483
GEE* + 179 m	cm	-5.0	+1.3	+3.9	+2.6	-2.7	-11.8	-25.1
Lead-free						Item no.: 300 254		

# Calibre 6.5 Creedmoor

LFB SOLID

SM TMS – Bullet weight 9.1 g / 140 grs.



Distance	m	0	50	100	150	200	250	300
Velocity	m/s	836	821	806	792	778	763	749
Energy	J	3,170	3,056	2,949	2,843	2,743	2,642	2,547
GEE* + 183 m	cm	-5.0	+1.3	+4.0	+3.0	-2.2	-11.1	-24.0
Lead-free						Item no.: 300 263		

\* Recommended zero distance

# Calibre 6.5 x 54 Mannlicher-Schoenauer

## LFB SOLID

### SM TMS – Bullet weight 9.1 g / 140 grs.



Distance	m	0	50	100	150	200	250	300
Velocity	m/s	740	706	673	640	609	578	548
Energy	J	2,484	2,260	2,052	1,859	1,681	1,514	1,364
GEE* + 154 m	cm	-5.0	+2.0	+4.0	+0.5	-8.7	-24.3	-47.9
Lead-core						Item no.: 300 251		

## LFB SOLID

### SM TMR – Bullet weight 10.3 g / 160 grs.



Distance	m	0	50	100	150	200	250	300
Velocity	m/s	680	642	606	570	536	504	474
Energy	J	2,337	2,085	1,855	1,643	1,455	1,286	1,134
GEE* + 143 m	cm	-5.0	+2.4	+3.9	-1.2	-14.1	-35.9	-67.0
Lead-core						Item no.: 300 252		

# Calibre 6.5 x 55

## LFB SOLID

### SM TMS HP – Bullet weight 7.0 g / 108 grs.



Distance	m	0	50	100	150	200	250	300
Velocity	m/s	878	843	808	775	742	710	679
Energy	J	2,698	2,485	1,855	2,101	1,927	1,765	1,613
GEE* + 184 m	cm	-5.0	+1.2	+3.9	+2.9	-2.0	-11.6	-26.0
Lead-core						Item no.: 300 263		

# Calibre 6.5 x 57

## LFB SOLID

### SM TMS HP – Bullet weight 7.0 g / 108 grs.



Distance	m	0	50	100	150	200	250	300
Velocity	m/s	910	874	839	804	771	738	706
Energy	J	2,898	2,672	2,461	2,264	2,080	1,907	1,746
GEE* + 189 m	cm	-5.0	+1.0	+3.9	+3.1	-1.3	-9.7	-22.8
Lead-core						Item no.: 300 2,5		





# Calibre 6.5 x 57 R



LFB SOLID

SM TMS HP – Bullet weight 7.0 g/ 108 grs.



Distance	m	0	50	100	150	200	250	300
Velocity	m/s	878	843	808	775	742	710	679
Energy	J	2,698	2,485	2,287	2,101	1,927	1,765	1,613
GEE* + 184 m	cm	-5.0	+1.2	+3.9	+2.9	-2.0	-11.6	-26.0
Lead-core						Item no.: 300 256		

# Calibre 6.5 x 65 RWS

LFB SOLID

SM TMS HP – Bullet weight 7.0 g/ 108 grs.



Distance	m	0	50	100	150	200	250	300
Velocity	m/s	996	957	920	884	848	814	780
Energy	J	3,471	3,208	2,962	2,732	2,517	2,316	2,129
GEE* + 206 m	cm	-5.0	+0.6	+3.6	+3.7	+0.6	-6.0	-16.2
Lead-core						Item no.: 300 258		

# Calibre 6.5 x 65 R RWS

LFB SOLID

SM TMS HP – Bullet weight 7.0 g/ 108 grs.



Distance	m	0	50	100	150	200	250	300
Velocity	m/s	982	944	907	871	836	801	768
Energy	J	3,375	3,117	2,877	2,653	2,443	2,247	2,064
GEE* + 2,3 m	cm	-5.0	+0.7	+3.7	+3.6	+0.3	-6.5	-17.1
Lead-core						Item no.: 300 259		

# Calibre 6.5 x 68

LFB SOLID

SM TMS HP – Bullet weight 7.0 g/ 108 grs.



Distance	m	0	50	100	150	200	250	300
Velocity	m/s	1,036	996	958	920	884	848	814
Energy	J	3,756	3,473	3,209	2,963	2,733	2,518	2,317
GEE* + 214 m	cm	-5.0	+0.5	+3.5	+3.8	+1.3	-4.5	-13.7
Lead-core						Item no.: 300 260		

\* Recommended zero distance

# Calibre 6.5 x 68 R

LFB SOLID

SM TMS HP – Bullet weight 7.0 g / 108 grs.



Distance	m	0	50	100	150	200	250	300
Velocity	m/s	1,054	1,014	975	937	900	864	829
Energy	J	3,888	3,595	3,323	3,069	2,833	2,611	2,404
GEE* + 218 m	cm	-5.0	+0.4	+3.4	+3.9	+1.6	-3.8	-12.6

Lead-core

Item no.: 300 262

# Calibre .270 WSM

LFB SOLID

SM TMS HP – Bullet weight 9.7 g / 150 grs.



Distance	m	0	50	100	150	200	250	300
Velocity	m/s	878	841	805	770	736	703	670
Energy	J	3,747	3,438	3,151	2,882	2,632	2,400	2,183
GEE* + 183 m	cm	-5.0	+1.2	+3.9	+2.8	-2.2	-11.9	-26.7

Lead-core

Item no.: 300 275

# Calibre .270 Winchester

LFB SOLID

SM TMS – Bullet weight 8.4 g / 130 grs.



Distance	m	0	50	100	150	200	250	300
Velocity	m/s	937	898	861	824	789	754	720
Energy	J	3,698	3,400	3,122	2,863	2,621	2,396	2,187
GEE* + 193 m	cm	-5.0	+0.9	+3.8	+3.3	-0.8	-8.7	-20.9

Lead-core

Item no.: 300 278

LFB SOLID

SM TMS HP – Bullet weight 9.7 g / 150 grs.



Distance	m	0	50	100	150	200	250	300
Velocity	m/s	875	838	802	767	733	700	668
Energy	J	3,721	3,414	3,128	2,862	2,613	2,382	2,167
GEE* + 183 m	cm	-5.0	+1.2	+3.9	+2.9	-2.2	-12.0	-27.0

Lead-core

Item no.: 300 277



# Calibre 7 x 57 R



LFB SOLID

SM TMS HP – Bullet weight 9.7 g / 150 grs.



Distance	m	0	50	100	150	200	250	300
Velocity	m/s	805	770	736	703	670	639	608
Energy	J	3,150	2,881	2,631	2,399	2,183	1,982	1,796
GEE* + 168 m	cm	-5.0	+1.6	+4.1	+2.0	-5.2	-17.7	-36.1
Lead-core						Item no.: 300 301		

# Calibre 7 x 57 R

LFB SOLID

SM TMS HP – Bullet weight 11.0 g / 170 grs.



Distance	m	0	50	100	150	200	250	300
Velocity	m/s	730	704	678	653	628	604	580
Energy	J	2,935	2,727	2,531	2,345	2,171	2,006	1,851
GEE* + 155 m	cm	-5.0	+2.0	+4.0	+0.6	-8.4	-23.4	-44.9
Lead-core						Item no.: 300 306		

# Calibre 7 x 57

LFB SOLID

SM TMS HP – Bullet weight 9.7 g / 150 grs.



Distance	m	0	50	100	150	200	250	300
Velocity	m/s	805	770	736	703	670	639	608
Energy	J	3,150	2,881	2,631	2,399	2,183	1,982	1,796
GEE* + 168 m	cm	-5.0	+1.6	+4.1	+2.0	-5.2	-17.7	-36.1
Lead-core						Item no.: 300 304		

LFB SOLID

SM TMR – Bullet weight 11.5 g / 177 grs.



Distance	m	0	50	100	150	200	250	300
Velocity	m/s	720	681	644	607	572	538	506
Energy	J	2,973	2,662	2,376	2,116	1,876	1,662	1,470
GEE* + 150 m	cm	-5.0	+2.1	+4.0	0.0	-10.5	-28.9	-56.1
Lead-core						Item no.: 300 305		

# Calibre 7 x 64

## LFB SOLID

SM TMS HP – Bullet weight 8.4 g / 130 grs.



Distance	m	0	50	100	150	200	250	300
Velocity	m/s	950	911	873	836	799	764	730
Energy	J	3,802	3,494	3,207	2,941	2,692	2,461	2,245
GEE* + 196 m	cm	-5.0	+0.9	+3.8	+3.4	-0.4	-8.1	-19.8
Lead-core						Item no.: 300 311		

## LFB SOLID

SM TMS HP – Bullet weight 11.0 g / 170 grs.



Distance	m	0	50	100	150	200	250	300
Velocity	m/s	837	808	780	753	726	700	674
Energy	J	3,859	3,600	3,355	3,124	2,905	2,698	2,504
GEE* + 179 m	cm	-5.0	+1.4	+4.0	+2.7	-2.9	-13.3	-28.8
Lead-core						Item no.: 300 307		

# Calibre 7 x 65 R

## LFB SOLID

SM TMS HP – Bullet weight 8.4 g / 130 grs.



Distance	m	0	50	100	150	200	250	300
Velocity	m/s	896	848	802	757	714	672	632
Energy	J	3,382	3,030	2,709	2,416	2,148	1,904	1,682
GEE* + 183 m	cm	-5.0	+1.2	+3.9	+2.9	-2.3	-12.5	-28.1
Lead-core						Item no.: 300 312		

## LFB SOLID

SM TMS HP – Bullet weight 9.7 g / 150 grs.



Distance	m	0	50	100	150	200	250	300
Velocity	m/s	888	851	815	779	745	711	679
Energy	J	3,833	3,518	3,225	2,952	2,697	2,460	2,239
GEE* + 185 m	cm	-5.0	+1.2	+3.9	+3.0	-1.9	-11.2	-25.5
Lead-core						Item no.: 300 302		

## LFB SOLID

SM TMS HP – Bullet weight 11.0 g / 170 grs.



Distance	m	0	50	100	150	200	250	300
Velocity	m/s	815	787	759	732	706	680	655
Energy	J	3,659	3,411	3,177	2,954	2,745	2,548	2,361
GEE* + 174 m	cm	-5.0	+1.5	+4.0	+2.4	-3.9	-15.2	-31.8
Lead-core						Item no.: 300 303		



# Calibre 7 mm Remington Magnum



LFB SOLID

SM TMS HP – Bullet weight 11.0 g / 170 grs.



Distance	m	0	50	100	150	200	250	300
Velocity	m/s	885	855	826	798	770	743	717
Energy	J	4,314	4,031	3,763	3,509	3,269	3,042	2,828
GEE* + 187 m	cm	-5.0	+1.2	+3.9	+3.1	-1.6	-10.2	-23.4
Lead-core						Item no.: 300 308		

# Calibre 7 x 66 SE v. Hofe

LFB SOLID

SM TMS HP – Bullet weight 11.0 g / 170 grs.



Distance	m	0	50	100	150	200	250	300
Velocity	m/s	900	870	841	812	784	757	730
Energy	J	4,462	4,170	3,894	3,634	3,387	3,154	2,933
GEE* + 189 m	cm	-5.0	+1.1	+3.8	+3.1	-1.3	-9.6	-22.1
Lead-core						Item no.: 300 309		

# Calibre 7 x 75 R SE v. Hofe

LFB SOLID

SM TMS – Bullet weight 9.1 g / 140 grs.



Distance	m	0	50	100	150	200	250	300
Velocity	m/s	931	899	867	837	806	777	748
Energy	J	3,932	3,664	3,412	3,174	2,950	2,739	2,540
GEE* + 192 m	cm	-5.0	+0.7	+3.4	+2.7	-2.0	-9.9	-22.0
Lead-core						Item no.: 300 313		

LFB SOLID

SM TMS HP – Bullet weight 11.0 g / 170 grs.



Distance	m	0	50	100	150	200	250	300
Velocity	m/s	855	826	798	770	743	716	690
Energy	J	4,027	3,759	3,506	3,266	3,039	2,825	2,623
GEE* + 182 m	cm	-5.0	+1.3	+4.0	+2.8	-2.3	-12.0	-26.6
Lead-core						Item no.: 300 310		

\* Recommended zero distance



# Calibre 7.5 x 55

LFB SOLID

SM TMS HP – Bullet weight 10.7 g / 165 grs.



Distance	m	0	50	100	150	200	250	300
Velocity	m/s	844	808	773	738	705	672	641
Energy	J	3,808	3,489	3,192	2,915	2,657	2,418	2,195
GEE* + 177 m	cm	-5.0	+1.4	+4.0	+2.6	-3.3	-14.3	-30.7
Lead-core						Item no.: 300 331		

# Calibre .308 Winchester

LFB SOLID

SM TMS HP – Bullet weight 10.7 g / 165 grs.



Distance	m	0	50	100	150	200	250	300
Velocity	m/s	831	795	760	726	693	661	630
Energy	J	3,692	3,381	3,091	2,821	2,570	2,336	2,119
GEE* + 174 m	cm	-5.0	+1.4	+4.0	+2.4	-3.9	-15.4	-32.5
Lead-core						Item no.: 300 355		

# Calibre .30 - 06

LFB SOLID

SM TMS HP – Bullet weight 11.7 g / 180 grs.



Distance	m	0	50	100	150	200	250	300
Velocity	m/s	825	791	757	724	692	661	631
Energy	J	3,970	3,645	3,343	3,059	2,796	2,550	2,322
GEE* + 173 m	cm	-5.0	+1.4	+4.0	+2.3	-4.1	-15.7	-32.9
Lead-core						Item no.: 300 351		

# Calibre .30 R Blaser

LFB SOLID

SM TMS HP – Bullet weight 11.7 g / 180 grs.



Distance	m	0	50	100	150	200	250	300
Velocity	m/s	865	830	795	761	729	696	665
Energy	J	4,364	4,014	3,687	3,381	3,095	2,829	2,581
GEE* + 182 m	cm	-5.0	+1.3	+4.0	+2.8	-2.4	-12.5	-27.6
Lead-core						Item no.: 300 352		



# Calibre .300 H + H Magnum



LFB SOLID

SM TMS HP – Bullet weight 11.7 g / 180 grs.



Distance	m	0	50	100	150	200	250	300
Velocity	m/s	900	864	828	794	760	727	695
Energy	J	4,724	4,350	4,001	3,675	3,370	3,085	2,820
GEE* + 187 m	cm	-5.0	+1.1	+3.9	+3.1	-1.6	-10.4	-23.9
Lead-core						Item no.: 300 354		

# Calibre .300 Winchester Magnum

LFB SOLID

SM TMS HP – Bullet weight 11.7 g / 180 grs.



Distance	m	0	50	100	150	200	250	300
Velocity	m/s	920	883	847	812	778	745	712
Energy	J	4,936	4,548	4,186	3,848	3,531	3,236	2,960
GEE* + 191 m	cm	-5.0	+1.0	+3.9	+3.3	-1.1	-9.2	-21.9
Lead-core						Item no.: 300 353		

# Calibre .300 WSM

LFB SOLID

SM TMS HP – Bullet weight 11.7 g / 180 grs.



Distance	m	0	50	100	150	200	250	300
Velocity	m/s	913	876	841	806	772	739	706
Energy	J	4,862	4,478	4,121	3,787	3,475	3,183	2,910
GEE* + 189 m	cm	-5.0	+1.0	+3.8	+3.1	-1.3	-9.7	-22.7
Lead-core						Item no.: 300 357		

# Calibre .300 Weatherby Magnum

LFB SOLID

SM TMS HP – Bullet weight 11.7 g / 180 grs.



Distance	m	0	50	100	150	200	250	300
Velocity	m/s	932	895	859	823	789	755	723
Energy	J	5,066	4,669	4,299	3,953	3,630	3,328	3,046
GEE* + 193 m	cm	-5.0	+0.9	+3.8	+3.3	-0.8	-8.7	-20.9
Lead-core						Item no.: 300 359		

\* Recommended zero distance

# Calibre .300 Pegasus

LFB SOLID

SM TMS HP – Bullet weight 11.7 g / 180 grs.



Distance	m	0	50	100	150	200	250	300
Velocity	m/s	994	960	928	896	865	834	804
Energy	J	5,763	5,380	5,020	4,680	4,360	4,059	3,774
GEE* + 208 m	cm	-5.0	+0.6	+3.6	+3.7	+0.8	-5.5	-15.4
Lead-core						Item no.: 300 363		

# Calibre 8 x 56 Mannlicher-Schoenauer

LFB SOLID

SM TMS HP – Bullet weight 12.7 g / 196 grs.



Distance	m	0	50	100	150	200	250	300
Velocity	m/s	655	620	585	552	521	491	462
Energy	J	2,725	2,438	2,174	1,936	1,722	1,528	1,354
GEE* + 137 m	cm	-5.0	+2.5	+3.7	-2.4	-16.8	-40.3	-73.5
Lead-core						Item no.: 300 409		

# Calibre 8 x 57 I

LFB SOLID

SM TMS HP – Bullet weight 12.7 g / 196 grs.



Distance	m	0	50	100	150	200	250	300
Velocity	m/s	770	734	699	665	632	600	568
Energy	J	3,765	3,421	3,102	2,808	2,535	2,283	2,050
GEE* + 160 m	cm	-5.0	+1.8	+4.1	+1.2	-7.1	-21.3	-42.3
Lead-core						Item no.: 300 413		

# Calibre 8 x 57 IR

LFB SOLID

SM TMS HP – Bullet weight 12.7 g / 196 grs.



Distance	m	0	50	100	150	200	250	300
Velocity	m/s	710	673	637	602	568	536	505
Energy	J	3,201	2,876	2,577	2,303	2,051	1,825	1,622
GEE* + 149 m	cm	-5.0	+2.2	+4.0	-0.1	-11.0	-29.9	-57.5
Lead-core						Item no.: 300 401		



# Calibre 8 x 57 IS



LFB SOLID

SM TMS HP – Bullet weight 12.7 g/ 196 grs.



Distance	m	0	50	100	150	200	250	300
Velocity	m/s	770	734	699	665	632	600	568
Energy	J	3,765	3,421	3,102	2,808	2,535	2,283	2,050
GEE* + 160 m	cm	-5.0	+1.8	+4.1	+1.2	-7.1	-21.3	-42.3
Lead-core						Item no.: 300 410		

LFB SOLID

SM TMR – Bullet weight 14.3 g/ 220 grs.



Distance	m	0	50	100	150	200	250	300
Velocity	m/s	747	712	677	644	611	580	549
Energy	J	3,978	3,610	3,271	2,956	2,665	2,396	2,152
GEE* + 155 m	cm	-5.0	+1.9	+4.0	+0.6	-8.4	-23.8	-47.0
Lead-core						Item no.: 300 415		

# Calibre 8 x 57 IRS

LFB SOLID

SM TMS HP – Bullet weight 12.7 g/ 196 grs.



Distance	m	0	50	100	150	200	250	300
Velocity	m/s	735	700	666	633	600	569	539
Energy	J	3,431	3,111	2,816	2,542	2,290	2,057	1,846
GEE* + 153 m	cm	-5.0	+2.0	+4.0	+0.4	-9.0	-25.3	-49.6
Lead-core						Item no.: 300 411		

# Calibre 8 x 57 R 360

LFB SOLID

SM TMR – Bullet weight 12.7 g/ 196 grs.



Distance	m	0	50	100	150	200	250	300
Velocity	m/s	585	552	521	490	462	435	410
Energy	J	2,173	1,935	1,721	1,528	1,353	1,200	1,067
GEE* + 121 m	cm	-5.0	+3.0	+2.8	-6.6	-25.9	-56.4	-100.6
Lead-core						Item no.: 300 412		

\* Recommended zero distance



## Calibre 8 x 58 R

LFB SOLID

SM TMR – Bullet weight 12.7 g/ 196 grs.



Distance	m	0	50	100	150	200	250	300
Velocity	m/s	590	557	525	495	466	438	413
Energy	J	2,211	1,969	1,751	1,555	1,378	1,221	1,086
GEE* + 122 m	cm	-5.0	+3.0	+2.9	-6.3	-25.2	-55.0	-98.3
Lead-core						Item no.: 300 418		

## Calibre 8 x 60 S

LFB SOLID

SM TMS-HP – Bullet weight 12.7 g/ 196 grs.



Distance	m	0	50	100	150	200	250	300
Velocity	m/s	780	744	708	674	641	608	577
Energy	J	3,864	3,513	3,187	2,886	2,607	2,350	2,111
GEE* + 162 m	cm	-5.0	+1.7	+4.1	+1.4	-6.6	-20.4	-40.6
Lead-core						Item no.: 300 419		

## Calibre 8 x 60 RS

LFB SOLID

SM TMR – Bullet weight 12.7 g/ 196 grs.



Distance	m	0	50	100	150	200	250	300
Velocity	m/s	765	726	689	652	617	583	550
Energy	J	3,717	3,350	3,013	2,703	2,418	2,157	1,920
GEE* + 158 m	cm	-5.0	+1.9	+4.0	+1.0	-7.7	-22.5	-45.0
Lead-core						Item no.: 300 417		

## Calibre 8 x 64 S

LFB SOLID

SM TMS HP – Bullet weight 12.8 g/ 198 grs.



Distance	m	0	50	100	150	200	250	300
Velocity	m/s	815	775	736	698	662	626	591
Energy	J	4,218	3,814	3,440	3,096	2,779	2,488	2,221
GEE* + 168 m	cm	-5.0	+1.5	+4.0	+2.0	-5.2	-17.9	-36.4
Lead-core						Item no.: 300 402		



# Calibre 8 x 65 RS



LFB SOLID

SM TMS HP – Bullet weight 12.8 g / 198 grs.



Distance	m	0	50	100	150	200	250	300
Velocity	m/s	815	775	736	698	662	626	591
Energy	J	4,218	3,814	3,440	3,096	2,779	2,488	2,221
GEE* + 168 m	cm	-5.0	+1.5	+4.0	+2.0	-5.2	-17.9	-36.4
Lead-core						Item no.: 300 403		

# Calibre 8 x 68 S

LFB SOLID

SM TMS HP – Bullet weight 12.7 g / 196 grs.



Distance	m	0	50	100	150	200	250	300
Velocity	m/s	910	870	831	794	757	721	687
Energy	J	5,259	4,808	4,390	4,001	3,641	3,305	2,995
GEE* + 188 m	cm	-5.0	+1.1	+3.9	+3.1	-1.4	-10.2	-23.9
Lead-core						Item no.: 300 405		

LFB SOLID

SM TMR – Bullet weight 14.3 g / 220 grs.



Distance	m	0	50	100	150	200	250	300
Velocity	m/s	875	832	791	751	712	674	637
Energy	J	5,458	4,939	4,460	4,019	3,613	3,240	2,897
GEE* + 181 m	cm	-5.0	+1.3	+4.0	+2.8	-2.6	-13.1	-28.9
Lead-core						Item no.: 300 406		

# Calibre 8 x 75 RS

LFB SOLID

SM TMS HP – Bullet weight 12.7 g / 196 grs.



Distance	m	0	50	100	150	200	250	300
Velocity	m/s	845	810	777	744	712	681	650
Energy	J	4,570	4,205	3,863	3,543	3,244	2,966	2,706
GEE* + 178 m	cm	-5.0	+1.4	+4.0	+2.7	-3.1	-13.9	-30.0
Lead-core						Item no.: 300 407		

LFB SOLID

SM TMR – Bullet weight 14.3 g / 220 grs.



Distance	m	0	50	100	150	200	250	300
Velocity	m/s	800	760	720	682	645	610	575
Energy	J	4,562	4,113	3,699	3,319	2,970	2,649	2,356
GEE* + 164 m	cm	-5.0	+1.6	+4.0	+1.6	-6.1	-19.5	-39.2
Lead-core						Item no.: 300 408		

\* Recommended zero distance

# Calibre 8.5 x 55 Blaser

## LFB SOLID

### SM TMS HP – Bullet weight 13.0 g / 200 grs.



Distance	m	0	50	100	150	200	250	300
Velocity	m/s	901	882	863	845	826	808	789
Energy	J	5,261	5,039	4,827	4,625	4,423	4,227	4,039
GEE* + 194 m	cm	-5.0	+1.0	+3.8	+3.3	-0.6	-8.2	-19.4
Lead-core						Item no.: 300 458		

## LFB SOLID

### SM TMR – Bullet weight 14.9 g / 230 grs.

Distance	m	0	50	100	150	200	250	300
Velocity	m/s	858	833	807	782	758	734	710
Energy	J	5,486	5,168	4,855	4,561	4,281	4,011	3,756
GEE* + 183 m	cm	-5.0	+1.2	+3.9	+2.9	-2.1	-11.2	-24.9
Lead-core						Item no.: 300 459		

# Calibre .338 Winchester Magnum

## LFB SOLID

### SM TMS HP – Bullet weight 14.6 g / 225 grs.



Distance	m	0	50	100	150	200	250	300
Velocity	m/s	858	808	759	712	667	623	581
Energy	J	5,367	4,754	4,199	3,694	3,240	2,829	2,459
GEE* + 174 m	cm	-5.0	+1.3	+4.0	+2.5	-4.0	-16.0	-33.9
Lead-core						Item no.: 300 451		

## LFB SOLID

### SM TMS HP – Bullet weight 16.2 g / 250 grs.



Distance	m	0	50	100	150	200	250	300
Velocity	m/s	810	765	722	679	639	599	562
Energy	J	5,315	4,741	4,217	3,740	3,305	2,911	2,554
GEE* + 165 m	cm	-5.0	+1.5	+4.0	+1.7	-5.9	-19.3	-39.6
Lead-core						Item no.: 300 452		



# Calibre .338 Blaser Magnum



Philosophy

LFB SOLID

SM TMS HP – Bullet weight 14.6 g / 225 grs.



Distance	m	0	50	100	150	200	250	300
Velocity	m/s	851	833	814	796	778	760	743
Energy	J	5,280	5,053	4,828	4,614	4,411	4,214	4,020
GEE* + 184 m	cm	-5.0	+1.2	+3.9	+2.9	-2.0	-10.8	-23.6
Lead-core						Item no.: 300 457		

Lead-free bullets

# Calibre .338 Lapua Magnum

LFB SOLID

SM TMS HP – Bullet weight 16.2 g / 250 grs.



Distance	m	0	50	100	150	200	250	300
Velocity	m/s	830	808	786	764	743	722	701
Energy	J	5,580	5,284	5,000	4,728	4,468	4,219	3,982
GEE* + 180 m	cm	-5.0	+1.4	+4.0	+2.7	-2.7	-12.6	-27.3
Lead-core						Item no.: 300 453		

Bonded bullets

Drive hunt cartridges

# Calibre 8.5 x 63

LFB SOLID

SM TMS HP – Bullet weight 14.6 g / 225 grs.



Distance	m	0	50	100	150	200	250	300
Velocity	m/s	818	783	749	716	683	651	621
Energy	J	4,878	4,469	4,088	3,732	3,402	3,094	2,809
GEE* + 171 m	cm	-5.0	+1.5	+4.0	+2.2	-4.5	-16.5	-34.1
Lead-core						Item no.: 300 454		

Special bullets for dog handlers

# Calibre 8.5 x 63 R

LFB SOLID

SM TMS HP – Bullet weight 14.6 g / 225 grs.



Distance	m	0	50	100	150	200	250	300
Velocity	m/s	795	761	727	694	662	631	601
Energy	J	4,608	4,217	3,852	3,513	3,198	2,905	2,633
GEE* + 166 m	cm	-5.0	+1.6	+4.1	+1.8	-5.6	-18.6	-37.3
Lead-core						Item no.: 300 455		

Soft point bullets

Long-Range cartridges

\* Recommended zero distance



# Calibre .340 Weatherby Magnum

LFB SOLID

SM TMS HP – Bullet weight 14.6 g / 225 grs.



Distance	m	0	50	100	150	200	250	300
Velocity	m/s	873	854	836	817	799	781	763
Energy	J	5,556	5,318	5,096	4,869	4,655	4,449	4,247
GEE* + 189 m	cm	-5.0	+1.1	+3.9	+3.2	-1.3	-9.6	-21.7
Lead-core						Item no.: 300 456		

# Calibre 9 x 57

LFB SOLID

SM TMR – Bullet weight 16.2 g / 250 grs.



Distance	m	0	50	100	150	200	250	300
Velocity	m/s	675	627	581	538	497	458	423
Energy	J	3,691	3,186	2,735	2,341	1,999	1,700	1,450
GEE* + 137 m	cm	-5.0	+2.4	+3.7	-2.4	-17.3	-41.6	-77.7
Lead-core						Item no.: 300 501		

# Calibre 9 x 57 R

LFB SOLID

SM TMR – Bullet weight 16.2 g / 250 grs.



Distance	m	0	50	100	150	200	250	300
Velocity	m/s	675	627	581	538	497	458	423
Energy	J	3,691	3,186	2,735	2,341	1,999	1,700	1,450
GEE* + 137 m	cm	-5.0	+2.4	+3.7	-2.4	-17.3	-41.6	-77.7
Lead-core						Item no.: 300 502		



# Calibre 9.3 x 62



## LFB SOLID

### SM TMS HP – Bullet weight 15.0 g / 232 grs.



Distance	m	0	50	100	150	200	250	300
Velocity	m/s	815	777	739	703	668	634	600
Energy	J	4,982	4,525	4,100	3,708	3,346	3,012	2,704
GEE* + 169 m	cm	-5.0	+1.5	+4.0	+2.0	-5.0	-17.5	-35.6
Lead-core						Item no.: 300 503		

## LFB SOLID

### SM TMS HP – Bullet weight 16.0 g / 247 grs.



Distance	m	0	50	100	150	200	250	300
Velocity	m/s	805	772	737	700	663	635	600
Energy	J	5,096	4,740	4,170	3,715	3,365	3,014	2,704
GEE* + 169 m	cm	-5.0	+1.5	+4.0	+2.0	-4.9	-17.4	-35.5
Lead-core						Item no.: 300 504		

## LFB SOLID

### SM TMR – Bullet weight 18.5 g / 285 grs.



Distance	m	0	50	100	150	200	250	300
Velocity	m/s	740	696	654	613	574	536	501
Energy	J	5,057	4,477	3,950	3,472	3,040	2,657	2,317
GEE* + 152 m	cm	-5.0	+2.0	+4.0	+0.3	-9.7	-27.7	-54.5
Lead-core						Item no.: 300 505		

# Calibre 9.3 x 64

## LFB SOLID

### SM TMS HP – Bullet weight 16.0 g / 247 grs.



Distance	m	0	50	100	150	200	250	300
Velocity	m/s	820	785	750	716	683	651	620
Energy	J	5,381	4,926	4,501	4,105	3,737	3,396	3,079
GEE* + 171 m	cm	-5.0	+1.5	+4.0	+2.0	-4.5	-16.5	-34.1
Lead-core						Item no.: 300 500		

## LFB SOLID

### SM TMR – Bullet weight 18.5 g / 285 grs.



Distance	m	0	50	100	150	200	250	300
Velocity	m/s	801	755	711	668	627	587	549
Energy	J	5,925	5,267	4,668	4,124	3,630	3,182	2,782
GEE* + 163 m	cm	-5.0	+1.7	+4.1	+1.5	-6.5	-20.3	-41.8
Lead-core						Item no.: 300 506		

\* Recommended zero distance

# Calibre 9.3 x 72 R

LFB SOLID

SM TMS HP – Bullet weight 15.0 g / 232 grs.



Distance	m	0	50	100	150	200	250	300
Velocity	m/s	640	607	574	543	513	485	457
Energy	J	3,072	2,760	2,471	2,211	1,976	1,762	1,568
GEE* + 134 m	cm	-5.0	+2.6	+3.6	-3.0	-18.3	-42.8	-77.0

Lead-core

Item no.: 300 509

# Calibre 9.3 x 74 R

LFB SOLID

SM TMS HP – Bullet weight 16.0 g / 247 grs.



Distance	m	0	50	100	150	200	250	300
Velocity	m/s	745	709	675	641	609	577	546
Energy	J	4,442	4,028	3,644	3,290	2,964	2,660	2,386
GEE* + 155 m	cm	-5.0	+2.0	+4.0	+0.6	-8.5	-24.0	-47.5

Lead-core

Item no.: 300 510

LFB SOLID

SM TMR – Bullet weight 18.5 g / 285 grs.



Distance	m	0	50	100	150	200	250	300
Velocity	m/s	726	683	641	601	562	525	490
Energy	J	4,867	4,305	3,794	3,331	2,914	2,545	2,218
GEE* + 150 m	cm	-5.0	+2.1	+3.9	0.0	-10.8	-29.8	-57.8

Lead-core

Item no.: 300 511



# Calibre .375 Flanged Magnum NE



## LFB SOLID

### SM TMR – Bullet weight 15.9 g / 245 grs.



Distance	m	0	50	100	150	200	250	300
Velocity	m/s	749	703	658	615	574	535	498
Energy	J	4,453	3,921	3,440	3,006	2,615	2,270	1,966
GEE* + 153 m	cm	-5.0	+2.0	+4.0	+0.4	-9.4	-27,3	-53.9
Lead-core						Item no.: 300 558		

## LFB SOLID

### SM TMR – Bullet weight 19.4 g / 300 grs.



Distance	m	0	50	100	150	200	250	300
Velocity	m/s	712	672	633	595	559	524	491
Energy	J	4,928	4,386	3,891	3,440	3,032	2,670	2,345
GEE* + 148 m	cm	-5.0	+2.2	+3.9	-0.3	-11.5	-31.1	-59.6
Lead-core						Item no.: 300 552		

## LFB SOLID

### SM VMR – Bullet weight 19.4 g / 300 grs.



Distance	m	0	50	100	150	200	250	300
Velocity	m/s	712	672	633	595	559	524	491
Energy	J	4,928	4,386	3,891	3,440	3,032	2,670	2,345
GEE* + 148 m	cm	-5.0	+2.2	+3.9	-0.3	-11.5	-31.1	-59.6
Lead-core						Item no.: 300 551		

\* Recommended zero distance

# Calibre .375 H + H Magnum

## LFB SOLID

### SM TMR – Bullet weight 15.9 g / 245 grs.



Distance	m	0	50	100	150	200	250	300
Velocity	m/s	856	806	758	711	667	623	582
Energy	J	5,817	5,158	4,561	4,018	3,528	3,085	2,686
GEE* + 173 m	cm	-5.0	+1.4	+4.0	+2.4	-4.2	-16.2	-34.2
Lead-core						Item no.: 300 557		

## LFB SOLID

### SM TMS HP – Bullet weight 17.5 g / 270 grs.



Distance	m	0	50	100	150	200	250	300
Velocity	m/s	834	798	762	728	694	662	630
Energy	J	6,085	5,567	5,085	4,636	4,218	3,831	3,472
GEE* + 174 m	cm	-5.0	+1.4	+4.0	+2.4	-3.9	-15.4	-32.3
Lead-core						Item no.: 300 550		

## LFB SOLID

### SM TMR – Bullet weight 19.4 g / 300 grs.



Distance	m	0	50	100	150	200	250	300
Velocity	m/s	785	742	701	661	622	585	549
Energy	J	5,990	5,357	4,778	4,249	3,766	3,326	2,931
GEE* + 161 m	cm	-5.0	+1.8	+4.1	+1.3	-7.0	-21.2	-43.1
Lead-core						Item no.: 300 553		

## LFB SOLID

### SM VMR – Bullet weight 19.4 g / 300 grs.



Distance	m	0	50	100	150	200	250	300
Velocity	m/s	785	742	701	661	622	585	549
Energy	J	5,990	5,357	4,778	4,249	3,766	3,326	2,931
GEE* + 161 m	cm	-5.0	+1.8	+4.1	+1.3	-7.0	-21.2	-43.1
Lead-core						Item no.: 300 560		

## LFB SOLID

### SM TMR – Bullet weight 22.7 g / 350 grs.



Distance	m	0	50	100	150	200	250	300
Velocity	m/s	718	681	645	610	576	544	513
Energy	J	5,846	5,259	4,718	4,220	3,764	3,352	2,982
GEE* + 150 m	cm	-5.0	+2.1	+4.0	0.0	-10.3	-28.5	-55.4
Lead-core						Item no.: 300 555		





# Calibre .375 H + H Magnum



LFB SOLID

SM VMR – Bullet weight 22.7 g / 350 grs.



Distance	m	0	50	100	150	200	250	300
Velocity	m/s	718	681	645	610	576	544	513
Energy	J	5,846	5,259	4,718	4,220	3,764	3,352	2,982
GEE* + 148 m	cm	-5.0	+2.1	+4.0	-1.2	-10.3	-28.5	-55.4
Lead-core						Item no.: 300 556		

# Calibre .375 Ruger

LFB SOLID

SM TMS HP – Bullet weight 17.5 g / 270 grs.



Distance	m	0	50	100	150	200	250	300
Velocity	m/s	795	760	725	692	659	628	597
Energy	J	5,529	5,050	4,603	4,188	3,803	3,445	3,114
GEE* + 165 m	cm	-5.0	+1.6	+4.0	+1.7	-5.8	-18.9	-37.7
Lead-core						Item no.: 300 569		

# Calibre .378 Weatherby Magnum

LFB SOLID

SM TMR – Bullet weight 19.4 g / 300 grs.



Distance	m	0	50	100	150	200	250	300
Velocity	m/s	860	815	771	729	688	649	611
Energy	J	7,189	6,457	5,785	5,169	4,606	4,093	3,623
GEE* + 176 m	cm	-5.0	+1.3	+4.0	+2.6	-3.6	-14.9	-31.9
Lead-core						Item no.: 300 566		

\* Recommended zero distance

# Calibre .400 H + H Magnum

LFB SOLID

SM TMR – Bullet weight 25.9 g / 400 grs.



Distance	m	0	50	100	150	200	250	300
Velocity	m/s	728	692	657	623	590	558	527
Energy	J	6,869	6,205	5,592	5,027	4,505	4,030	3,602
GEE* + 152 m	cm	-5.0	+2.1	+4.0	+0.3	-9.5	-26.5	-52.0
Lead-core						Item no.: 300 567		

# Calibre 10.3 x 60 R

LFB SOLID

SM TMS – Bullet weight 15.9 g / 245 grs.



Distance	m	0	50	100	150	200	250	300
Velocity	m/s	790	753	716	681	663	646	580
Energy	J	4,954	4,496	4,071	3,678	3,316	2,981	2,672
GEE* + 163 m	cm	-5.0	+1.7	+4.0	+1.5	-6.3	-19.8	-39.5
Lead-core						Item no.: 300 563		

# Calibre 10.3 CAPRA

LFB SOLID

SM TMS HP – Bullet weight 15.9 g / 245 grs.



Distance	m	0	50	100	150	200	250	300
Velocity	m/s	908	853	799	748	699	651	606
Energy	J	6,556	5,780	5,081	4,450	3,883	3,374	2,919
GEE* + 182 m	cm	-5.0	+1.2	+3.9	+2.9	-2.5	-13.1	-29.2
Lead-core						Item no.: 300 568		

# Calibre 10.75 x 68

LFB SOLID

SM TMR – Bullet weight 22.5 g / 347 grs.



Distance	m	0	50	100	150	200	250	300
Velocity	m/s	682	644	608	572	539	506	476
Energy	J	5,230	4,667	4,154	3,682	3,261	2,884	2,544
GEE* + 143 m	cm	-5.0	+2.3	+3.8	-1.2	-14.0	-35.6	-66.5
Lead-core						Item no.: 300 601		



# Calibre .404 Jeffery



## LFB SOLID

### SM TMR – Bullet weight 25.9 g / 400 grs.



Distance	m	0	50	100	150	200	250	300
Velocity	m/s	710	673	636	601	567	535	504
Energy	J	6,533	5,865	5,251	4,687	4,171	3,708	3,291
GEE* + 149 m	cm	-5.0	+2.2	+4.0	-0.1	-11.0	-30.0	-57.7
Lead-core						Item no.: 300 602		

## LFB SOLID

### SM VMR – Bullet weight 25.9 g / 400 grs.



Distance	m	0	50	100	150	200	250	300
Velocity	m/s	710	673	636	601	567	535	504
Energy	J	6,533	5,865	5,251	4,687	4,171	3,708	3,291
GEE* + 149 m	cm	-5.0	+2.2	+4.0	-0.1	-11.0	-30.0	-57.7
Lead-core						Item no.: 300 603		

# Calibre .416 Remington Magnum

## LFB SOLID

### SM TMR – Bullet weight 26.6 g / 410 grs.



Distance	m	0	50	100	150	200	250	300
Velocity	m/s	698	663	630	597	565	535	506
Energy	J	6,472	5,846	5,268	4,734	4,243	3,801	3,400
GEE* + 147 m	cm	-5.0	+2.2	+3.9	-0.4	-11.7	-31.1	-59.3
Lead-core						Item no.: 300 605		

## LFB SOLID

### SM VMR – Bullet weight 26.6 g / 410 grs.



Distance	m	0	50	100	150	200	250	300
Velocity	m/s	698	663	630	597	565	535	506
Energy	J	6,472	5,846	5,268	4,734	4,243	3,801	3,400
GEE* + 147 m	cm	-5.0	+2.2	+3.9	-0.4	-11.7	-31.1	-59.3
Lead-core						Item no.: 300 604		

# Calibre .416 Rigby

## LFB SOLID

### SM TMS HP – Bullet weight 17.5 g / 270 grs.



Distance	m	0	50	100	150	200	250	300
Velocity	m/s	806	757	709	663	619	577	537
Energy	J	5,683	5,010	4,400	3,851	3,356	2,910	2,518
GEE* + 162 m	cm	-5.0	+1.6	+4.0	+1.4	-6.7	-20.9	-43.0
Lead-core						Item no.: 300 606		

\* Recommended zero distance

# Calibre .416 Rigby

## LFB SOLID

### SM TMR – Bullet weight 26.6 g / 410 grs.



Distance	m	0	50	100	150	200	250	300
Velocity	m/s	712	677	643	610	578	547	517
Energy	J	6,735	6,089	5,492	4,940	4,432	3,971	3,554
GEE* + 150 m	cm	-5.0	+2.1	+4.0	0.0	-10.3	-28.5	-55.6
Lead-core						Item no.: 300 608		

## LFB SOLID

### SM VMR – Bullet weight 26.6 g / 410 grs.



Distance	m	0	50	100	150	200	250	300
Velocity	m/s	712	677	643	610	578	547	517
Energy	J	6,735	6,089	5,492	4,940	4,432	3,971	3,554
GEE* + 150 m	cm	-5.0	+2.1	+4.0	0.0	-10.3	-28.5	-55.6
Lead-core						Item no.: 300 609		

# Calibre .450 Rigby

## LFB SOLID

### SM TMR – Bullet weight 31.1 g / 480 grs.



Distance	m	0	50	100	150	200	250	300
Velocity	m/s	710	677	645	614	584	555	527
Energy	J	7,840	7,134	6,478	5,869	5,304	4,787	4,317
GEE* + 150 m	cm	-5.0	+2.2	+4.0	0.0	-10.2	-28.0	-54.1
Lead-core						Item no.: 300 701		

## LFB SOLID

### SM VMR – Bullet weight 31.1 g / 480grs.



Distance	m	0	50	100	150	200	250	300
Velocity	m/s	710	677	645	614	584	555	527
Energy	J	7,840	7,134	6,478	5,869	5,304	4,787	4,317
GEE* + 150 m	cm	-5.0	+2.2	+4.0	0.0	-10.2	-28.0	-54.1
Lead-core						Item no.: 300 702		

# Calibre .45 Blaser

## LFB SOLID

### SM TMR – Bullet weight 22.7 g / 350 grs.



Distance	m	0	50	100	150	200	250	300
Velocity	m/s	690	623	560	502	448	402	363
Energy	J	5,399	4,401	3,552	2,853	2,277	1,830	1,494
GEE* + 133 m	cm	-5.0	+2.4	+3.6	-3.4	-19.8	-48.8	-93.1
Lead-core						Item no.: 300 716		



# Calibre .450 / .400 NE 3"



## LFB SOLID

### SM TMR – Bullet weight 25.9 g / 400 grs.



Distance	m	0	50	100	150	200	250	300
Velocity	m/s	640	610	581	553	526	500	475
Energy	J	5,309	4,823	4,372	3,959	3,582	3,236	2,920
GEE* + 135 m	cm	-5.0	+2.5	+3.6	-2.7	-17.4	-41.1	-74.4
Lead-core						Item no.: 300 712		

## LFB SOLID

### SM VMR – Bullet weight 25.9 g / 400 grs.



Distance	m	0	50	100	150	200	250	300
Velocity	m/s	640	610	581	553	526	500	475
Energy	J	5,309	4,823	4,372	3,959	3,582	3,236	2,920
GEE* + 135 m	cm	-5.0	+2.5	+3.6	-2.7	-17.4	-41.1	-74.4
Lead-core						Item no.: 300 713		

# Calibre .458 Winchester Magnum

## LFB SOLID

### SM TMR – Bullet weight 31.1 g / 480 grs.



Distance	m	0	50	100	150	200	250	300
Velocity	m/s	685	653	622	591	562	533	506
Energy	J	7,298	6,630	6,010	5,435	4,906	4,425	3,986
GEE* + 146 m	cm	-5.0	+2.3	+3.9	-0.6	-12.3	-32.2	-60.9
Lead-core						Item no.: 300 705		

## LFB SOLID

### SM VMR – Bullet weight 31.1 g / 480 grs.



Distance	m	0	50	100	150	200	250	300
Velocity	m/s	685	653	622	591	562	533	506
Energy	J	7,298	6,630	6,010	5,435	4,906	4,425	3,986
GEE* + 146 m	cm	-5.0	+2.3	+3.9	-0.6	-12.3	-32.2	-60.9
Lead-core						Item no.: 300 706		

\* Recommended zero distance



# Calibre .458 Lott

## LFB SOLID

SM TMR – Bullet weight 32.4 g / 500 grs.



Distance	m	0	50	100	150	200	250	300
Velocity	m/s	690	659	628	598	569	541	514
Energy	J	7,713	7,027	6,389	5,796	5,246	4,745	4,288
GEE* + 147 m	cm	-5.0	+2.3	+3.9	-0.4	-11.7	-30.9	-58.8
Lead-core						Item no.: 300 709		

## LFB SOLID

SM VMR – Bullet weight 32.4 g / 500 grs.



Distance	m	0	50	100	150	200	250	300
Velocity	m/s	690	659	628	598	569	541	514
Energy	J	7,713	7,027	6,389	5,796	5,246	4,745	4,288
GEE* + 147 m	cm	-5.0	+2.3	+3.9	-0.4	-11.7	-30.9	-58.8
Lead-core						Item no.: 300 710		

# Calibre .460 Weatherby Magnum

## LFB SOLID

SM TMR – Bullet weight 32.4 g / 500 grs.



Distance	m	0	50	100	150	200	250	300
Velocity	m/s	768	735	702	670	639	609	580
Energy	J	9,556	8,742	7,985	7,280	6,624	6,017	5,447
GEE* + 160 m	cm	-5.0	+1.8	+4.0	+1.2	-7.1	-21.1	-41.4
Lead-core						Item no.: 300 707		

## LFB SOLID

SM VMR – Bullet weight 32.4 g / 500 grs.



Distance	m	0	50	100	150	200	250	300
Velocity	m/s	768	735	702	670	639	609	580
Energy	J	9,556	8,742	7,985	7,280	6,624	6,017	5,447
GEE* + 160 m	cm	-5.0	+1.8	+4.0	+1.2	-7.1	-21.1	-41.4
Lead-core						Item no.: 300 708		



# Calibre .470 NE



## LFB SOLID



### SM TMR – Bullet weight 32.4 g / 500 grs.

Distance	m	0	50	100	150	200	250	300
Velocity	m/s	655	622	589	558	528	500	472
Energy	J	6,951	6,262	5,626	5,045	4,520	4,044	3,611
GEE* + 138 m	cm	-5.0	+2.5	+3.8	-2.1	-16.2	-39.3	-71.8
Lead-core						Item no.: 300 751		

## LFB SOLID



### SM VMR – Bullet weight 32.4 g / 500 grs.

Distance	m	0	50	100	150	200	250	300
Velocity	m/s	655	622	589	558	528	500	472
Energy	J	6,951	6,262	5,626	5,045	4,520	4,044	3,611
GEE* + 138 m	cm	-5.0	+2.5	+3.8	-2.1	-16.2	-39.3	-71.8
Lead-core						Item no.: 300 752		

# Calibre .500 NE

## LFB SOLID



### SM TMR – Bullet weight 36.9 g / 570 grs.

Distance	m	0	50	100	150	200	250	300
Velocity	m/s	655	625	597	569	542	516	491
Energy	J	7,924	7,225	6,575	5,971	5,420	4,915	4,451
GEE* + 140 m	cm	-5.0	+2.5	+3.8	-1.7	-15.2	-37.2	-68.5
Lead-core						Item no.: 300 801		

## LFB SOLID



### SM VMR – Bullet weight 36.9 g / 570 grs.

Distance	m	0	50	100	150	200	250	300
Velocity	m/s	655	625	597	569	542	516	491
Energy	J	7,924	7,225	6,575	5,971	5,420	4,915	4,451
GEE* + 140 m	cm	-5.0	+2.5	+3.8	-1.7	-15.2	-37.2	-68.5
Lead-core						Item no.: 300 802		

# Calibre .500 Jeffery

## LFB SOLID

SM TMR – Bullet weight 34.7 g / 535 grs.



Distance	m	0	50	100	150	200	250	300
Velocity	m/s	705	675	646	618	590	563	537
Energy	J	8,616	7,905	7,239	6,617	6,037	5,499	5,007
GEE* + 149 m	cm	-5.0	+2.2	+3.9	-0.1	-10.3	-27.7	-53.4
Lead-core						Item no.: 300 803		

## LFB SOLID

SM VMR – Bullet weight 34.7 g / 535 grs.



Distance	m	0	50	100	150	200	250	300
Velocity	m/s	705	675	646	618	590	563	537
Energy	J	8,616	7,905	7,239	6,617	6,037	5,499	5,007
GEE* + 149 m	cm	-5.0	+2.2	+3.9	-0.1	-10.3	-27.7	-53.4
Lead-core						Item no.: 300 804		

# Calibre .500 / .416 NE

## LFB SOLID

SM TMR – Bullet weight 26.6 g / 410 grs.



Distance	m	0	50	100	150	200	250	300
Velocity	m/s	712	677	643	610	578	547	517
Energy	J	6,735	6,089	5,492	4,940	4,432	3,971	3,554
GEE* + 149 m	cm	-5.0	+2.1	+3.9	-0.1	-10.6	-28.8	-55.6
Lead-core						Item no.: 300 807		

## LFB SOLID

SM VMR – Bullet weight 26.6 g / 410 grs.



Distance	m	0	50	100	150	200	250	300
Velocity	m/s	712	677	643	610	578	547	517
Energy	J	6,735	6,089	5,492	4,940	4,432	3,971	3,554
GEE* + 149 m	cm	-5.0	+2.1	+3.9	-0.1	-10.6	-28.8	-55.6
Lead-core						Item no.: 300 808		



# Calibre .577 NE



## LFB SOLID

### SM TMR – Bullet weight 48.6 g / 750 grs.



Distance	m	0	25	50	75	100	125	150
Velocity	m/s	610	592	574	557	540	523	507
Energy	J	9,043	8,514	8,009	7,534	7,084	6,659	6,256
GEE* + 126 m	cm	-5.0	-0.2	+2.9	+4.1	+3.2	+0.2	-5.1
Lead-core						Item no.: 300 830		

## LFB SOLID

### SM VMR – Bullet weight 48.6 g / 750 grs.



Distance	m	0	25	50	75	100	125	150
Velocity	m/s	610	592	574	557	540	523	507
Energy	J	9,043	8,514	8,009	7,534	7,084	6,659	6,256
GEE* + 126 m	cm	-5.0	-0.2	+2.9	+4.1	+3.2	+0.2	-5.1
Lead-core						Item no.: 300 831		

# Calibre .600 NE

## LFB SOLID

### SM TMR – Bullet weight 58.3 g / 900 grs.



Distance	m	0	25	50	75	100	125	150
Velocity	m/s	605	586	567	559	532	515	498
Energy	J	10,674	10,012	9,389	8,803	8,250	7,728	7,235
GEE* + 124 m	cm	-5.0	-0.2	+2.9	+4.0	+3.0	-0.2	-5.7
Lead-core						Item no.: 300 832		

## LFB SOLID

### SM VMR – Bullet weight 58.3 g / 900 grs.



Distance	m	0	25	50	75	100	125	150
Velocity	m/s	605	586	567	559	532	515	498
Energy	J	10,674	10,012	9,389	8,803	8,250	7,728	7,235
GEE* + 124 m	cm	-5.0	-0.2	+2.9	+4.0	+3.0	-0.2	-5.7
Lead-core						Item no.: 300 833		

# Calibre .700 H + H NE

## LFB SOLID

**SM TMR – Bullet weight 64.8 g / 1.000 grs.**



Distance	m	0	50	100
Velocity	m/s	630	605	580
Energy	J	12,860	11,847	10,888
GEE* + 134 m	cm	-5.0	+2.5	+3.5
			Lead-core	Item no.: 300 900

## LFB SOLID

**SM VMR – Bullet weight 64.8 g / 1.000 grs.**



Distance	m	0	50	100
Velocity	m/s	630	605	580
Energy	J	12,860	11,847	10,888
GEE* + 134 m	cm	-5.0	+2.5	+3.5
			Lead-core	Item no.: 300 901









# Hunting worldwide





# Drive hunt cartridges

Hunting cartridges with bonded  
lead-core bullets



# Achieving the optimum

During drive hunts the game is on the move and mostly very stressed and nervous. That is why a high instantaneous effectiveness is required so that the game reacts reliably to the shot.

Cartridges especially developed for drive hunting provide, due to their slightly flattened tip and the thin-walled jacket in the front area, a reliable and immediate deformation, even in the case of light game. It is also important that the bullets for drive hunting show directional stability within the body of the game and that the bullet energy is transferred evenly to the body of the game over the entire distance. This is ensured by using bonded bullets because of the higher bullet mass and adapted bullet velocity.

## Safe hunting

Drive hunting cartridges have the following properties:

- Quick energy transfer
- Good shock effect
- Reaction of the game to the shot
- Break down of the game within the shooter's sighting distance
- Quick death of the game
- Higher bullet mass
- Adapted bullet velocity





## Technology

When manufacturing drive hunting bullets, the LFB bonded core technology, that has proved itself for years, is applied. This technology prevents bullet fragments from splitting off, ensures directional stability, and avoids contamination of the body of the game by lead particles.

The residual bullet weight is 99 % to 100 %. The use of special drive hunting cartridges preserves the high-quality venison even in case of bone hits.

The bullet jacket of high-quality tombac minimises barrel fouling and ensures an optimal deformation.

The ballistic properties are adapted to the intended use. Consequently, for drive hunts an improvement of the bullet effect is provided also for the “faster” calibres. This is achieved by higher bullet weights.

## Information packaging units

The standard packaging unit is 10 cartridges per cartridge box.

For reloaders our bullets are also available in packaging units of 50 pieces each.



**ATTENTION!** Fire or projection hazard.  
Keep away from heat, hot surfaces, sparks, open flames or other ignition sources. No smoking.





# Calibre .308 Winchester

DRÜCKJAGD

SM TM PP – Bullet weight 14.3 g / 220 grs.



Distance	m	0	25	50	75	100	125	150
Velocity	m/s	710	687	664	641	619	598	576
Energy	J	3,593	3,361	3,141	2,931	2,733	2,545	2,367
GEE* + 146 m	cm	-5.0	-0.7	+2.2	+3.8	+3.9	+2.5	-0.6
Lead-core						Item no.: 300 340		

# Calibre .30 - 06

DRÜCKJAGD

SM TM PP – Bullet weight 14.3 g / 220 grs.



Distance	m	0	25	50	75	100	125	150
Velocity	m/s	738	714	691	668	645	623	601
Energy	J	3,882	3,635	3,401	3,178	2,967	2,767	2,577
GEE* + 151 m	cm	-5.0	-0.9	+2.1	+3.7	+4.0	+2.8	+0,1
Lead-core						Item no.: 300 341		

# Calibre .300 Winchester Magnum

DRÜCKJAGD

SM TM PP – Bullet weight 14.3 g / 220 grs.



Distance	m	0	25	50	75	100	125	150
Velocity	m/s	810	785	760	736	712	689	666
Energy	J	4,677	4,391	4,119	3,859	3,613	3,380	3,159
GEE* + 163 m	cm	-5.0	-1.2	+1.6	+3.4	+4.0	+3.4	+1.5
Lead-core						Item no.: 300 360		



# Calibre 8 x 57 IS



DRÜCKJAGD

SM TM PP – Bullet weight 14.3 g / 220 grs.



Distance	m	0	25	50	75	100	125	150
Velocity	m/s	765	745	725	705	686	667	648
Energy	J	4,172	3,953	3,744	3,544	3,352	3,168	2,992
GEE* + 157 m	cm	-5.0	-1.0	+1.8	+3.5	+4.0	+3.1	+0.9
Lead-core						Item no.: 300 418		

# Calibre 8 x 57 IRS

DRÜCKJAGD

SM TM PP – Bullet weight 14.3 g / 220 grs.



Distance	m	0	25	50	75	100	125	150
Velocity	m/s	713	694	674	655	637	619	601
Energy	J	3,624	3,429	3,242	3,063	2,892	2,728	2,571
GEE* + 149 m	cm	-5.0	-0.8	+2.2	+3.8	+3.9	+2.6	-0.1
Lead-core						Item no.: 300 421		

# Calibre 9.3 x 62

DRÜCKJAGD

SM TM PP – Bullet weight 18.5 g / 2,5 grs.



Distance	m	0	25	50	75	100	125	150
Velocity	m/s	739	717	695	673	652	631	610
Energy	J	5,043	4,742	4,456	4,183	3,923	3,676	3,440
GEE* + 152 m	cm	-5.0	-0.9	+2.1	+3.7	+4.0	+2.9	+0.3
Lead-core						Item no.: 300 512		

# Hunting worldwide





# Special bullets for dog handlers

## Hunting cartridges with bonded lead-core bullets





# For specialists

Dog handlers need a special bullet when giving the finishing shot to a wounded game. On the one hand the dog may not be endangered (e.g. by bullet fragments) on the other hand the game must be killed reliably according to the hunting principles. Therefore it is important that no fragments split off from the bullet and that the bullet does not change in direction within the body of the game.

In accordance with these criteria and for this intended purpose only, LFB has developed a new bullet. Due to the special bullet shape and the graded thickness of the jacket, a reliable energy transfer to the body of the game is achieved. The LFB bonded core technology prevents bullet fragments from splitting off as well as the separation of the bullet jacket from the bullet core of precisely matched hardness. This guarantees the important directional stability within the body of the game. The optimisation of the bullet weight ensures a reliable killing effect for all types of game. Due to these measures the risk of collateral damage was decreased considerably.

## Safe hunting

The special cartridges for dog handlers have the following properties:

- No bullet fragmentation
- Directional stability
- Reliable killing effect for all types of game



## Technology

The bullet jacket is made of high-quality tombac. The bonded lead core is alloyed. The cannellure ensures that the relatively short special bullets for dog handlers are reliably held in the cartridge case.



Bullets for dog handlers / dog handler bullet deformed

## Information packaging units

The standard packaging unit is 10 cartridges per cartridge box.



**ATTENTION!** Fire or projection hazard.  
Keep away from heat, hot surfaces, sparks, open flames  
or other ignition sources. No smoking.





# Calibre .308 Winchester

## SEARCHING

**TMR SPEZIAL – Bullet weight 10.6 g / 164 grs.**

Distance	m	0	5	10	15	20	25	30	35	40
Velocity	m/s	812	805	797	790	782	775	768	760	753
Energy	J	3,504	3,439	3,376	3,314	3,252	3,191	3,132	3,073	3,015

Lead-core

Item no.: 300 360



# Calibre 8 x 57 IS

## SEARCHING

**TMR SPEZIAL – Bullet weight 11.3 g / 174 grs.**

Distance	m	0	5	10	15	20	25	30	35	40
Velocity	m/s	810	805	800	795	790	785	780	775	770
Energy	J	3,720	3,674	3,628	3,583	3,538	3,493	3,449	3,406	3,363

Lead-core

Item no.: 300 420



# Calibre 9.3 x 62

## SEARCHING

**TMR SPEZIAL – Bullet weight 14.8 g / 228 grs.**

Distance	m	0	5	10	15	20	25	30	35	40
Velocity	m/s	780	775	770	764	759	754	749	744	739
Energy	J	4,495	4,434	4,375	4,316	4,258	4,200	4,142	4,086	4,030

Lead-core

Item no.: 300 520







Philosophy

Lead-free bullets

Bonded bullets

Drive hunt cartridges

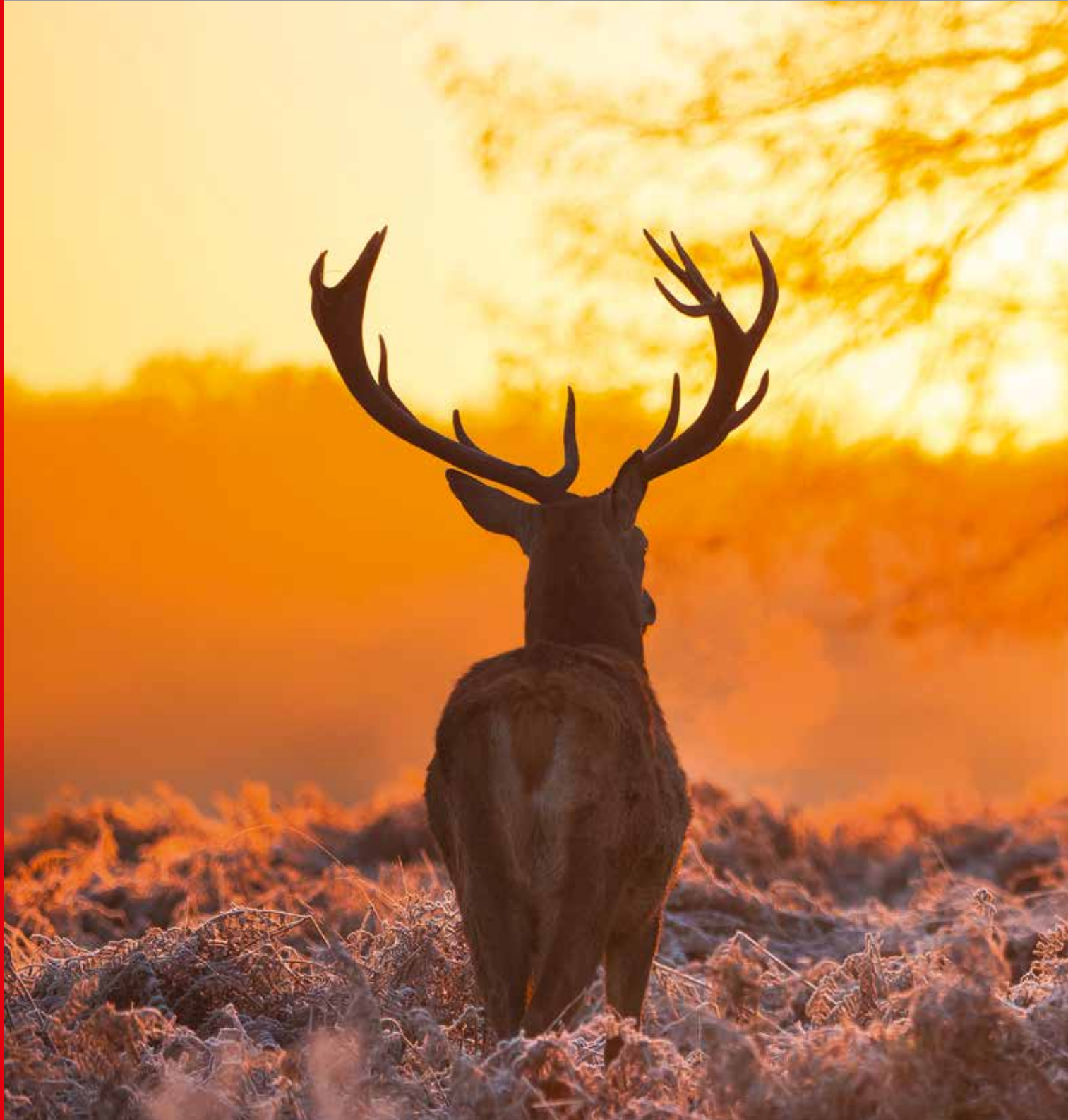
Special bullets for dog handlers

Soft point bullets

Long-Range cartridges



# Hunting worldwide



# Soft point bullets

Hunting cartridges with traditional  
lead-core bullets





# Precision cartridges at reasonable prices

The close collaboration with the customers is an important contribution to the development of new products. The request for precision cartridges for hunting and hunting sport shooting at reasonable prices has been fulfilled by the new cartridge series "LFB CLASSIC SOLID".

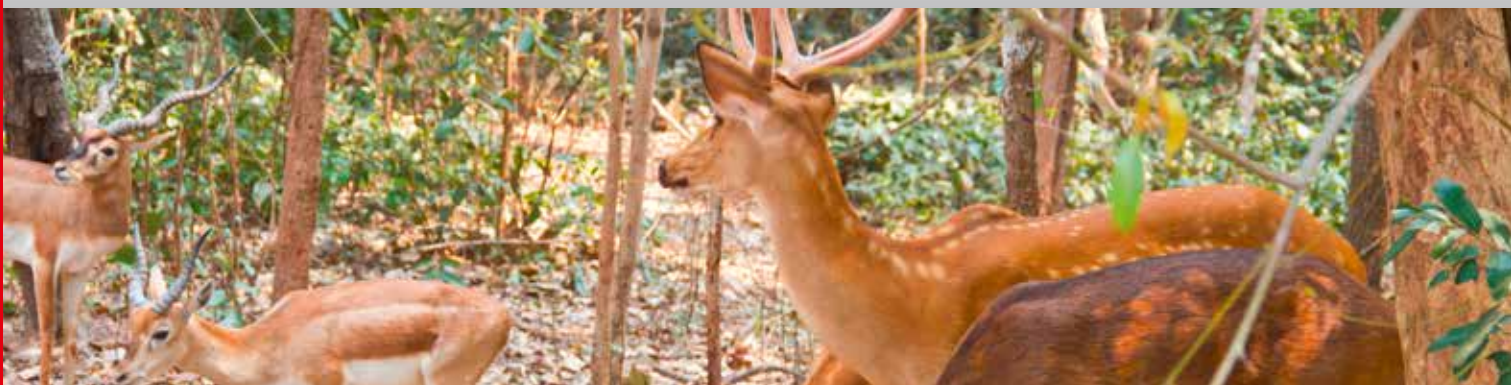
The cartridges for the common calibres are equipped with a traditional soft point bullet. They are of the same extraordinary precision as the cartridges with the SOLID bonded bullet.

## Safe hunting

The use of high-quality soft point bullets ensures reliable penetration and a very good killing effect.

The new LFB CLASSIC SOLID cartridges have the following properties:

- Maximum preservation of venison
- Quick death of the game
- Adapted bullet velocity
- Reasonable price



## Technology

The bullet jacket of the LFB CLASSIC SOLID bullet is made of tombac. The jacket thickness as well as the hardness of the lead core pressed into the jacket are optimally adjusted to the corresponding calibre.

The bullets fragment in the front section, the main part of the bullet deforms according to the target resistance so achieving a reliable exit hole.

## Information packaging units

The standard packaging unit is 10 cartridges per cartridge box. For reloaders our bullets are also available in packaging units of 50 pieces each.



**ATTENTION!** Fire or projection hazard.  
Keep away from heat, hot surfaces, sparks, open flames or other ignition sources. No smoking.





## Calibre .243 Winchester

LFB CLASSIC SOLID

TMS – Bullet weight 6.5 g / 100 grs.



Distance	m	0	50	100	150	200	250	300
Velocity	m/s	883	843	804	766	729	694	659
Energy	J	2,526	2,302	2,095	1,902	1,724	1,559	1,406
GEE* + 183 m	cm	-5.0	+1.2	+3.9	+2.9	-2.2	-12.1	-27.2
Lead-core							Item no.: 310 901	

## Calibre .270 Winchester

LFB CLASSIC SOLID

TMS – Bullet weight 9.7 g / 150 grs.



Distance	m	0	50	100	150	200	250	300
Velocity	m/s	828	792	758	724	691	659	628
Energy	J	3,332	3,052	2,790	2,546	2,320	2,109	1,914
GEE* + 173 m	cm	-5.0	+1.4	+4.0	+2.3	-4.1	-15.7	-32.9
Lead-core							Item no.: 310 902	

## Calibre 7 mm Remington Magnum

LFB CLASSIC SOLID

TMS – Bullet weight 9.0 g / 139 grs.



Distance	m	0	50	100	150	200	250	300
Velocity	m/s	975	938	902	867	833	800	767
Energy	J	4,281	3,963	3,665	3,386	3,125	2,881	2,652
GEE* + 202 m	cm	-5.0	+0.7	+3.7	+3.6	+0.2	-6.7	-17.4
Lead-core							Item no.: 310 903	

## Calibre .308 Winchester

LFB CLASSIC SOLID

TMS – Bullet weight 9.7 g / 150 grs.



Distance	m	0	50	100	150	200	250	300
Velocity	m/s	859	815	773	732	692	653	616
Energy	J	3,586	3,230	2,902	2,601	2,325	2,073	1,842
GEE* + 177 m	cm	-5.0	+1.4	+4.0	+2.6	-3.4	-14.6	-31.5
Lead-core							Item no.: 310 904	



# Calibre .30-06



## LFB CLASSIC SOLID

TMS - Bullet weight 11.7 g / 180 grs.



Distance	m	0	50	100	150	200	250	300
Velocity	m/s	805	771	738	706	674	644	614
Energy	J	3,779	3,468	3,176	2,905	2,652	2,416	2,196
GEE* + 168 m	cm	-5.0	+1.5	+4.0	+1.9	-5.1	-17.6	-35.8
Lead-core						Item no.: 310 905		

# Calibre .300 Winchester Magnum

## LFB CLASSIC SOLID

TMS - Bullet weight 11.7 g / 180 grs.



Distance	m	0	50	100	150	200	250	300
Velocity	m/s	926	889	853	818	784	750	718
Energy	J	5,001	4,609	4,242	3,900	3,581	3,282	3,003
GEE* + 192 m	cm	-5.0	+1.0	+3.8	+3.3	-0.9	-9.0	-21.4
Lead-core						Item no.: 310 906		

# Calibre 8 x 57 IS

## LFB CLASSIC SOLID

TMR - Bullet weight 12.7 g / 196 grs.



Distance	m	0	50	100	150	200	250	300
Velocity	m/s	738	703	669	635	603	572	542
Energy	J	3,459	3,137	2,840	2,565	2,310	2,075	1,863
GEE* + 154 m	cm	-5.0	+2.0	+4.0	+0,5	-8,8	-24,8	-48,8
Lead-core						Item no.: 310 907		

# Calibre 9.3 x 62

## LFB CLASSIC SOLID

TMR - Bullet weight 18.5 g / 285 grs.



Distance	m	0	50	100	150	200	250	300
Velocity	m/s	718	680	643	607	572	538	507
Energy	J	4,761	4,267	3,814	3,399	3,018	2,677	2,372
GEE* + 150 m	cm	-5.0	+2.2	+4.0	0.0	-10.5	-29.0	-56.2
Lead-core						Item no.: 310 908		

\* Recommended zero distance

# Sport shooting





# Long-Range cartridges

Sport shooting cartridges with lead-free bullets



# Precision-made sport shooting bullets

When long-range shooting, stable trajectories are particularly important. Therefore exclusively precision-made sport shooting bullets with an equally precise loading should be used.

The LFB SPORT LONG RANGE cartridge fulfills these high demands on precision and is available for the most common calibres.

The sport shooting solid bullets are turned out of the solid material on highly accurate CNC lathes. As the bullet contacts the barrel only via the 3 driving bands, the precision of the barrel is not affected by deposits, even with a large number of shots.

All cartridges are loaded with propellant powders granting a uniform burning rate at high and low outdoor temperatures.

## Accurate shooting

The LFB SPORT LONG RANGE cartridges have the following properties:

- Precise loading
- Minimised contact surface
- Uniform burning rate





## Technology

For the production of the Long Range bullets a lead-free copper alloy is used that goes without intermediate cleaning of the barrel, even with a high number of shots. As the Long Range bullets are produced on high-precision lathes no run-out errors arise within the bullets.

The bullet shape provides a flat trajectory even for distant targets as well as the precision required for this. In stronger calibres the cannelure ensures that the bullets are reliably held in the case neck.

## Information packaging units

The standard packaging unit is 10 cartridges per cartridge box.

For reloaders our bullets are also available in packaging units of 50 pieces each.



**ATTENTION!** Fire or projection hazard.  
Keep away from heat, hot surfaces, sparks, open flames or other ignition sources. No smoking.





## Calibre .260 Remington

### LFB SPORT LONG RANGE

Bullet weight 6.5 g / 100 grs.



Distance	m	0	50	100	150	200	250	300
Velocity	m/s	938	902	868	834	801	769	738
Energy	J	2,851	2,639	2,440	2,254	2,080	1,917	1,763
GEE* + 195 m	cm	-5.0	+0.9	+3.8	+3.4	-0.6	-8.3	-20.0

Lead-free

Item no.: 300 910

## Calibre .308 Winchester

### LFB SPORT LONG RANGE

Bullet weight 9.0 g / 140 grs.



Distance	m	0	50	100	150	200	250	300
Velocity	m/s	925	889	854	819	786	753	721
Energy	J	3,881	3,583	3,305	3,044	2,800	2,572	2,358
GEE* + 192 m	cm	-5.0	+1.0	+3.8	+3.3	-0.9	-9.0	-21.3

Lead-free

Item no.: 300 904

## Calibre .300 Winchester Magnum

### LFB SPORT LONG RANGE

Bullet weight 10.2 g / 157 grs.



Distance	m	0	50	100	150	200	250	300
Velocity	m/s	987	949	912	876	841	807	774
Energy	J	4,956	4,582	4,232	3,906	3,601	3,315	3,048
GEE* + 204 m	cm	-5.0	+0.7	+3.6	+3.7	+0.4	-6.3	-16.8

Lead-free

Item no.: 300 905

## Calibre .338 Lapua Magnum

### LFB SPORT LONG RANGE

Bullet weight 13.6 g / 209 grs.



Distance	m	0	50	100	150	200	250	300
Velocity	m/s	977	945	914	883	853	824	796
Energy	J	6,464	6,047	5,654	5,283	4,932	4,601	4,288
GEE* + 205 m	cm	-5.0	+0.7	+3.6	+3.7	+0.5	-6.1	-16.3

Lead-free

Item no.: 300 906



# Calibre .375 Chey Tac



## LFB SPORT LONG RANGE

Bullet weight 17.4 g / 269 grs.



Distance	m	0	50	100	150	200	250	300
Velocity	m/s	989	968	947	927	907	887	867
Energy	J	8,525	7,253	6,146	5,180	4,338	3,607	2,974
GEE* +214 m	cm	-5.0	+0.6	+3.6	+3.8	+1.2	-4.3	-13.0

Lead-free Item no.: 300 911

## LFB SPORT LONG RANGE

Bullet weight 22.8 g / 352 grs.



Distance	m	0	50	100	150	200	250	300
Velocity	m/s	945	927	909	891	873	856	839
Energy	J	10,185	9,793	9,415	9,048	8,694	8,351	8,020
GEE* +205 m	cm	-5.0	+0.8	+3.7	+3.6	+0.5	-5.9	-15.7

Lead-free Item no.: 300 912

# Calibre .408 Chey Tac

## LFB SPORT LONG RANGE

Bullet weight 22.6 g / 348 grs.



Distance	m	0	50	100	150	200	250	300
Velocity	m/s	942	922	901	881	862	843	824
Energy	J	10,006	9,575	9,160	8,761	8,376	8,006	7,649
GEE* +203 m	cm	-5.0	+0.8	+3.7	+3.6	+0.3	-6.3	-16.5

Lead-free Item no.: 300 907

## LFB SPORT LONG RANGE

Bullet weight 24.0 g / 370 grs.



Distance	m	0	50	100	150	200	250	300
Velocity	m/s	899	879	860	840	821	803	784
Energy	J	9,689	9,266	8,859	8,467	8,089	7,724	7,373
GEE* +193 m	cm	-5.0	+1.0	+3.8	+3.3	-0.8	-8.5	-20.0

Lead-free Item no.: 300 913

## LFB SPORT LONG RANGE

Bullet weight 27.2 g / 420 grs.



Distance	m	0	50	100	150	200	250	300
Velocity	m/s	890	871	852	833	814	796	778
Energy	J	10,780	10,316	9,869	9,438	9,022	8,621	8,234
GEE* +191 m	cm	-5.0	+1.1	+3.9	+3.0	-1.0	-8.9	-20.9

Lead-free Item no.: 300 914

\* Recommended zero distance

# Calibre .50 BMG Lab. 1

LFB SPORT LONG RANGE – Shooting distance up to 1,000 m: loading 1

Bullet weight 46.8 g / 723 grs.



Distance	m	0	50	100	150	200	250	300
Velocity	m/s	748	735	722	709	696	683	671
Energy	J	13,107	12,647	12,199	11,764	11,342	10,932	10,533
up to 1,000 m	cm	-5.0	+1.8	+4.1	+1.6	-5.8	-18.4	-36.3

Lead-free

Item no.: 300 908

# Calibre .50 BMG Lab. 2

LFB SPORT LONG RANGE – Shooting distance more than 1,000 m: loading 2

Bullet weight 46.8 g / 723 grs.



Distance	m	0	50	100	150	200	250	300
Velocity	m/s	814	800	786	773	759	746	733
Energy	J	15,522	14,997	14,485	13,988	13,504	13,032	12,574
more than 1,000 m	cm	-5.0	+1.4	+4.0	+2.6	-2.7	-12.2	-26.1

Lead-free

Item no.: 300 909







Philosophy

Lead-free bullets

Bonded bullets

Drive hunt cartridges

Special bullets for dog handlers

Soft point bullets

Long-Range cartridges



[www.lfb-munition.com](http://www.lfb-munition.com)  
Made in Germany

**Exclusion of liability**

The data and information given in this catalogue are based on our current knowledge and experiences. Due to the many possible influences, they do not release the user of our products from carrying out own tests and experiments. A legally binding assurance of certain properties or the suitability for a specific application cannot be derived from our data and descriptions. The use as well as the handling of our products are beyond our possibilities of control and are the full responsibility of the buyer. Ammunition is sold only to holders of an acquisition license in accordance with applicable law.



**LFB – Labor für Ballistik**  
Aufhauser Straße 25  
73337 Bad Überkingen  
Germany

**Phone: +49 7331 68 08 91**  
**Fax: +49 7331 94 66 24**

**E-Mail: [info@lfb-munition.com](mailto:info@lfb-munition.com)**  
**Internet: [www.lfb-munition.com](http://www.lfb-munition.com)**